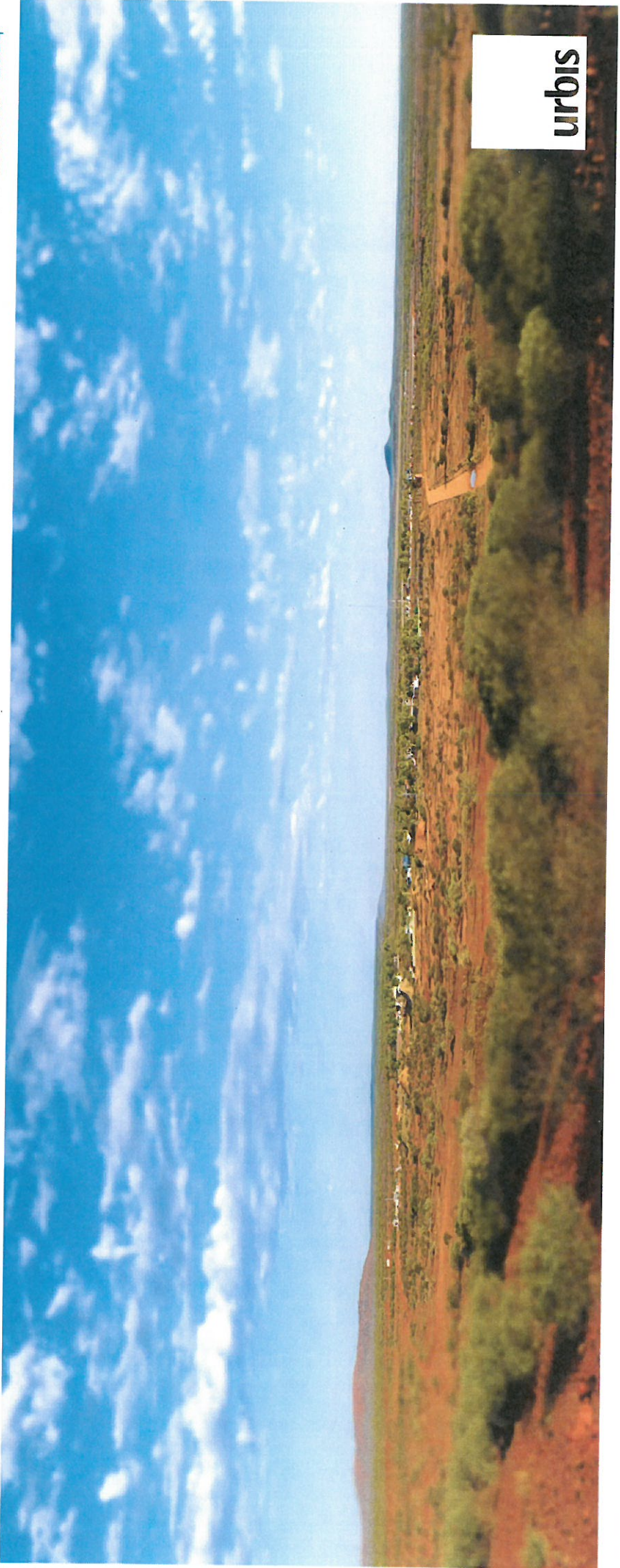


# Yalgoo

TOWN REVITALISATION STRATEGY 2014



urbis

© URBIS 2014

This publication is subject to copyright. Except as permitted under the Copyright Act 1968, no part of it may in any form or by any means (electronic, mechanical, photocopying, recording or otherwise) be reproduced, stored in a retrieval system or transmitted without prior written permission. Enquiries should be addressed to the publishers.

URBIS

Australia Asia Middle East  
[www.urbis.com.au](http://www.urbis.com.au)

# Contents:

## [0] Introduction

- 0.1 Overview
- 0.2 Town Revitalisation Plan
- 0.3 Community Consultation

## [1] Townsite Plan

- 1.1 About
- 1.2 Priority Streets
- 1.3 Community Hubs
  - 1.4 Civic Hub
  - 1.5 Visitor Hub
  - 1.6 Walk Trails

## [3] Recreation and Community Facilities

- 3.1 Recreation
- 3.2 Community

## [4] Trails

- 4.1 Recreations & Fitness Trails
- 4.2 Heritage Trail

## [5] Next Steps

- 5.1 Next Steps

## [6] Appendices

Appendix A - Consultation Summary

## [2] Street Improvements

- 2.1 About
- 2.2 Seating
- 2.3 Shade
- 2.4 Greenery
- 2.5 Improved & Continuous Footpaths
- 2.6 Safe Crossing Points
- 2.7 Reduced Traffic Speed
- 2.8 Street Improvement Plans



### **Acknowledgement of Traditional Custodians**

*The Shire of Yalgoo acknowledges the traditional custodians of this land, people of the Yamatji and Badimia nations on whose land this plan was produced. As we share knowledge and learning of this plan we pay respect to the knowledge embedded forever within the Aboriginal custodianship of country.*

[0]

# Introduction

0.1  
0.2  
0.3

Overview  
Town Revitalisation Plan  
Community Consultation

# [0] Introduction

## 0.1 Overview

The Shire of Yalgoo is located within the Murchison Goldfields area of the Mid-West region in Western Australia, approximately 200km east of Geraldton. The Shire has a population of approximately 400 people, with approximately 120 people live within the townsite of Yalgoo. The local economy is largely based around mining and pastoralism.

### Strategic Plan

The Shire of Yalgoo Strategic Community Plan 2013-2023 sets out the vision, aspirations and objectives for the Yalgoo community over the next 10 years.

The Strategic Community Plan is the principal planning document within the Shire's planning process. The Shire of Yalgoo Strategic Community Plan 2013 was prepared following a period of community engagement to determine and set out the community's vision, aspirations and values to cover the next 10 years.

Within the Strategic Community Plan objectives were defined for economic, social, environment and civic leadership. Desired outcomes were developed for each strategic objective and strategies established to achieve each desired outcome.

### Community Aspirations and Values

Economic - Challenge, Achievement and Sustainability  
Social - Education, Respect and Belongingness  
Environmental - Appreciation and Balance  
Civic -- Service, Leadership and Integrity

Consistent with the objectives of the Integrated Planning and Reporting Guidelines, the Shire's other principle planning documents; the Corporate Plan; the Long Term Financial Plan; Asset Management Plan and Workforce Development Plan are all integrated with the vision, aspirations and objectives of the Yalgoo community as documented in the Strategic Community Plan.

The Shire's Local Planning Scheme No.2 (LPS2) was gazetted in 2011. A Local Planning Strategy has also been prepared and adopted by Council. The Strategy has been endorsed by the WAPC and formal written confirmation has been received by the Shire dated 9 June 2011.

Several matters have emerged since the preparation of the Local Planning Strategy which require additional investigation and potential policy development. Additionally the Shire has a desire to enhance the liveability and amenity of the town. Key issues are the revitalisation of Gibbons Street and an increase in safety on Plesse Street which forms part of the Geraldton-Mt Magnet Road. The Shire has sought advice on ways to reduce traffic speeds and improve pedestrian safety.

This Revitalisation Strategy with associated concept plans may be used by the Shire to apply for funding through Royalties for Regions, or other State or Federal Government sources.

COMMUNITY VISION: *"Inclusive and peaceful, prosperous and strong"*

## 0.2 Town Revitalisation Plan

The Yalgoo Townsite Revitalisation plan has been developed, consistent with the vision, aspirations and values set out in the Strategic Plan. It addresses fully or in part the following objectives as set out in the Strategic Plan 2013:

	Values & Objectives	#	Outcomes
SOCIAL	Education, Respect & Belongingness	1.1	Maintenance of existing and development of new community infrastructure and resources
	An educated, respectful and inclusive community -a place where people feel they belong	1.2	Improved opportunities for education and training
		1.3	Successful facilitation of a wide ranging program of community activities
		1.4	Improved delivery of existing or new health and support services
ENVIRONMENT	Appreciation and Balance	2.1	Well maintained and improved built environments
		2.2	The natural environment is protected and utilised
	An environment that is managed well and appreciated by all	2.3	Indigenous cultural heritage in the landscape is protected and appreciated
		2.4	Become a leader in remote location waste management
ECONOMIC	Challenge, Achievement and Sustainability	3.1	Increased population size
		3.2	Increased housing stock
	A modern and sustainable economy that provides for our growing community	3.3	Increase in number of tourists visiting the Shire
		3.4	Maintained and improved services and amenities
CIVIC	Service, Leadership and Integrity	4.1	An informed and participatory community
		4.2	To have our community trust and respect us
	To be a Shire that serves our community with integrity and leadership	4.3	High quality integrated planning and compliance
		4.4	High quality strategic partnerships



### What we are doing...

The Shire of Yalgoo and the community have a vision to revitalise and grow Yalgoo. This vision acknowledges the long-term economic future of Yalgoo, and responds to the need to achieve a more sustainable and diverse community with a greater sense of permanence.

Making this vision a reality requires long-term planning, investment and coordination of many individuals, organisations and layers of Government. It relies on the delivery of a range of initiatives aimed at enabling new economic opportunities, providing more housing choice and affordability, improving services and facilities, and creating a more legible, inviting and enjoyable town centre.

This plan provides a "road map" for the ongoing development of Yalgoo. It identifies a range of short term and long term projects that are deliverable by the community and government that support the identified needs and aspirations of Yalgoo residents.

Importantly, the YTRP will help a broad range of stakeholders to work cooperatively, and facilitate a whole of community approach required to achieve the vision for Yalgoo.

### Why are we doing this?

The vision to revitalise and grow Yalgoo supports the evolution of Yalgoo into a regional town of substance, quality and permanence – a place for people to live, work and play. Key objectives include:

- Enhance the quality of life for existing residents and to attract and retain future residents;
- Respond to the environment and achieve a sense of place;
- Achieve sustainable growth and development over the long term;
- Support economic activity and promote diversification;
- Deliver a vibrant and activated town centre; and
- Identify and establish a partnership approach to deliver the project.

### 0.3 Community Consultation

Community consultation was undertaken by Urbis in collaboration with the Yalgoo Shire in February 2014 in order to identify the key issues concerning the local population. The workshops and discussions undertaken at this time aimed to achieve a thorough understanding of the towns' history, aspirations, and operational needs in order to create a Revitalisation Strategy that enhances the identity and character of Yalgoo.

Consultation and interviews included meetings with the following people and community groups:

- The Shire CEO & Community Consultation Officer
- The Women's Group
- The Caravan Park Managers
- Community Consultation – Public session
- Yalgoo Primary School Children
- The Shire President & Staff
- The Works Crew



Photo 1- Yalgoo Primary School consultation



## Key Issues Summary

The issues highlighted by the community consultation are listed below under key areas of concern.

### Plesse St:

- Traffic speed is 80km
- Large trucks passing through
- Children crossing
- Signage leading into town unclear
- Mainroads restrictions
- Too little built form or plantings to enclose the street
- Lack of rubbish bins

### Gibbons St:

- Children crossing
- Wide unmarked road
- No seating
- No marked bus stop

### Tourism:

- Information bay is not clearly identified
- Signage to historic sites need replacing/renewal
- Nowhere to get coffee
- Everything looks closed

### Campbell St:

- No shade
- No street lighting

### Look out:

- No comfortable seating taking in the view
- Visually degraded by water supply tank
- No lighting

### Hotel:

- Hard to identify if open
- No engagement with the street

### Shop:

- Hard to identify
- Parking dangerous, People backing out are a hazard to pedestrians

### Parks:

- Lawn issues relating to high mineral content of water
- Shamrock St children's playground has no boundary fencing to stop balls and children going onto the road suddenly
- Park on the corner of Shamrock & Henty receives no water & has no seating

### Railway complex:

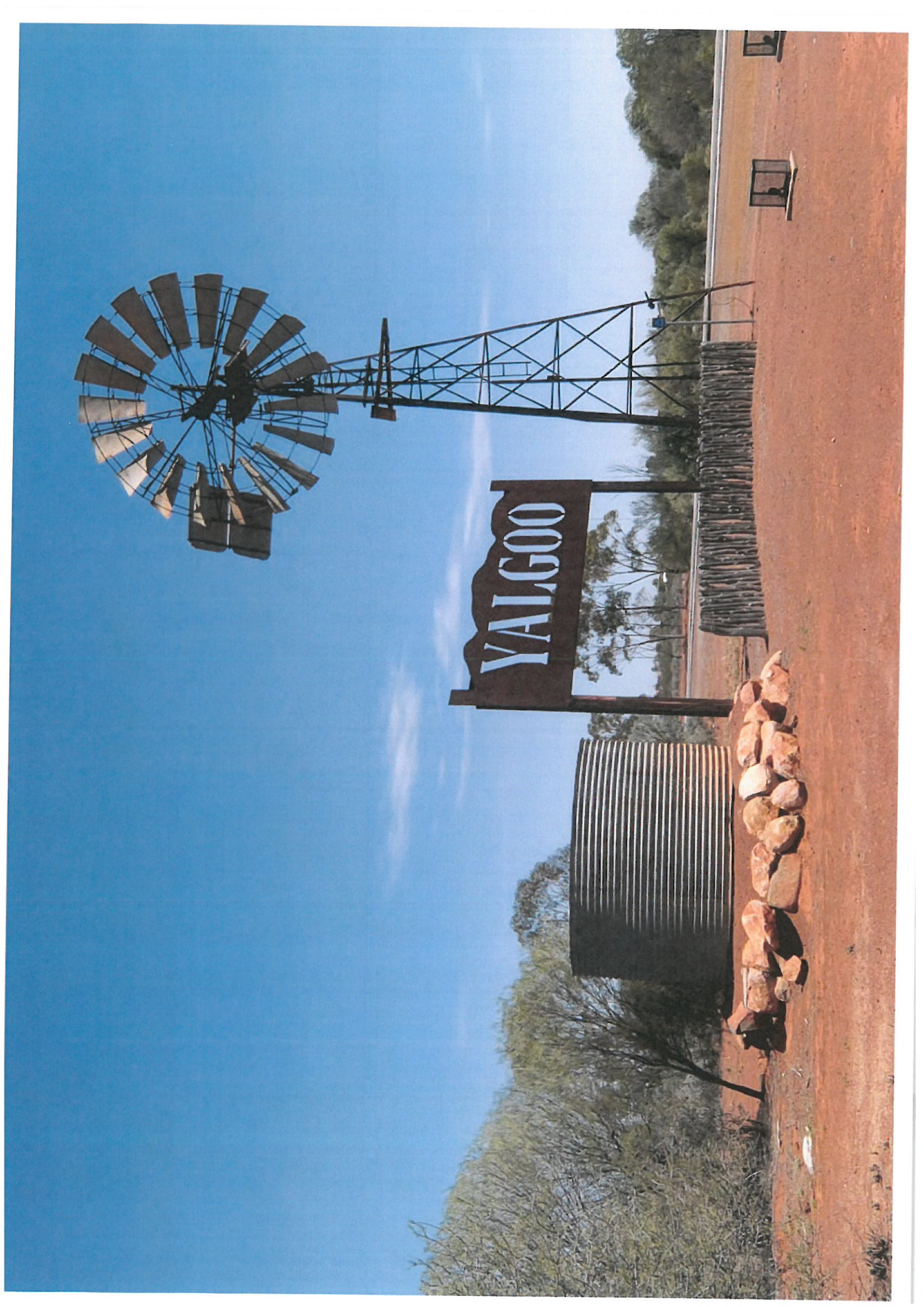
- Heritage building suffering bad rising damp

### Museum

- Entrance is unlined Shire car park
- Sign is obscured by trees from drivers entering town



Photo 2 - Community Hall consultation public session



# [1]

## Townsite Plan

1.1	<b>About</b>
1.2	<b>Priority Streets</b>
1.2.1	Gibbons Street
1.2.2	Plesse Street
1.3	<b>Community Hubs</b>
1.3.1	Community Hall Hub
1.3.2	Town Centre Hub
1.4	<b>Civic Hub</b>
1.5	<b>Visitor Hub</b>
1.6	<b>Walk Trails</b>

# [1] Townsite Plan

## 1.1 ABOUT

The purpose of the Townsite Plan is to lay down a strategy for Council owned infrastructure, community and recreation facilities in the town, with the view to enhance and consolidate facilities in order to improve usage, maintenance, aesthetic and built form outcomes for the community and the Shire.

After a review of existing facilities and a community needs analysis based on current population and future projections and community workshops the following areas were identified for development:

- Priority Streets
- Priority Intersections
- Priority Pedestrian Crossing
- Community Hubs
- Civic Hub
- Visitor Hub
- Caravan Park Entry
- Walk Trails

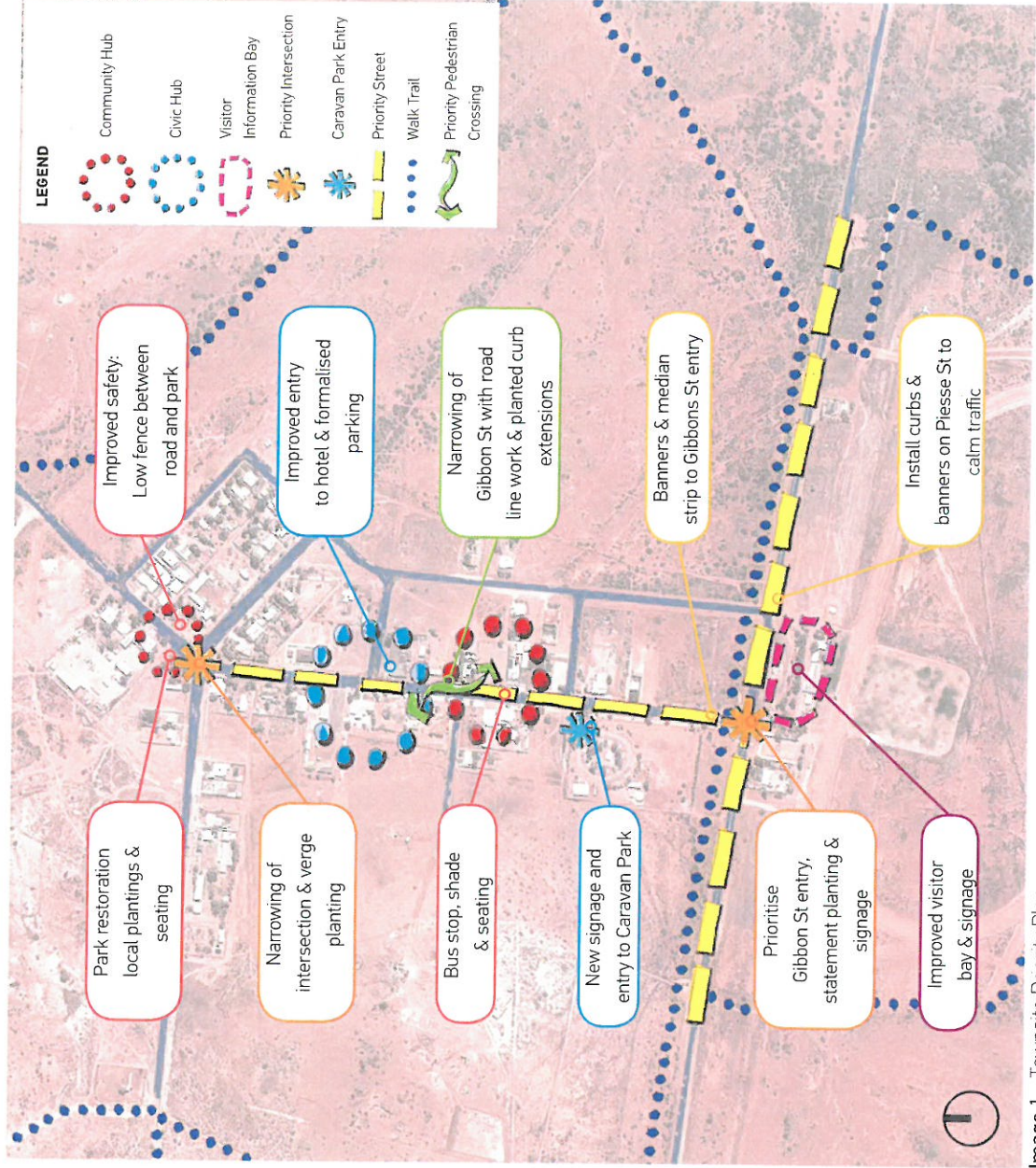


Image 1 - Townsite Priority Plan

## 1.2 PRIORITY STREETS

Piesse and Gibbons St are both in need of traffic calming measures due to the size of trucks passing along them, the speed of vehicles on Piesse St and the nature of Yalgoo as a small town where children roam freely. Yalgoo's revitalisation also centres on these streets as they represent the key zones of local activity and tourism facilities

### 1.2.1 GIBBONS STREET

#### Gibbons & Piesse St Intersection

A street hierarchy and clear signage needs to be developed in order to prioritise the Gibbons & Piesse St intersection as the main entry into Yalgoo. Gibbons St is the main street of town and gives access to all major amenities for visitors. By visually prioritising Gibbons over Campbell a clear direction into town is signalled and the likelihood of visitation increased. Improvements to the Gibbons Street entry should combine some or all of the following:

- Entry statement- Interpretive artwork
- Entry Statement- Planting design and mounding
- Clear and attractive signage
- Median Strip- Planted
- Median strip with banners

Increasing the visibility of the Gibbons Street entry should also form part of the traffic calming strategy on Piesse St and through the town centre. Creating a median strip at the entry to Gibbons would prevent

trucks and vehicles cutting corners and sets a calmer traffic pace into town. Using banners in the median strip helps to create height and divide the road visually. They will also strengthen the entry statement and can be used to showcase local artwork or market local businesses and attractions.

#### Town Centre

Traffic Calming interventions on Gibbons Street would also be beneficial around community and civic hubs to increase pedestrian safety and the visual quality of town. Improvements to Gibbons Street should use a combination of the following:

- Visually narrowing the street through road line work and tree planting
- Curb extensions
- Signage or road line work to indicate pedestrian priority zones
- Formalised parking

Ideas for the application and function of these improvements is explained further in the Main Street Beautification section of this Strategy.

#### Gibbons, Shamrock, Henty & Selwyn Street Intersection

This intersection at the north end of Gibbons St is located between residential areas, the school, the town centre, the Community Hall and the playground park. All roads meeting at this junction are approximately 20m wide. The result is a large expanse of bitumen and an unnecessarily wide intersection that benefits neither vehicles nor pedestrians.

This important community crossing would benefit greatly from the following traffic calming measures:

- Visually narrowing the street through road line work
- Curb extensions
- Planted Median Strip on Selwyn Street

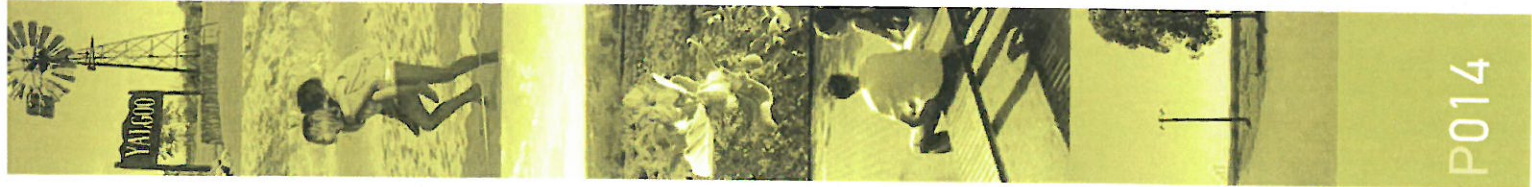
#### Caravan Park Entry

The entry to the Caravan Park off Gibbons Street is currently inconspicuous. The opportunity exists to create an attractive and visible entry to the Park that is inviting to tourists and that benefits the overall streetscape. This can be achieved through:

- Clear and attractive signage
- Landscaping that compliments the overall planting scheme for Gibbons St



Photo 3 - Entry statement sign and planting design



### 1.2.2 PIESSÉ STREET

The prime traffic issue in Yalgoo occurs along Piesse Street. This stretch of road is utilised by large trucks and vehicles travelling between Geraldton and Mt Magnets at speeds in excess of 80km per hour. Key crossing points for local residents have been identified both at the intersections of Piesse and Gibbons St and Piesse and Campbell St. Main Roads signs and speed change indicators exist but greater visibility of a local presence is needed in order to mentally trigger drivers to realise they are passing through a populated area. A number of traffic calming methods and landscape interventions can be implemented together along Piesse St to form a strategy that increases the visual cues to motorists and raises the profile of the town.

- Curbs
- Narrowed road line work
- Trees plantings either side of the road
- Banners and Signage
- Mounding and landscaping at intervals
- Public Art



Photo 4 - Trees and banners help visually narrow wide roads

## 1.3 COMMUNITY HUBS

### 1.3.1 COMMUNITY HALL HUB

There are currently two areas acting as community hubs within Yalgoo. The first is located in the north of the town on Shamrock St and is centred around the Community Hall and the children's playground. The amenity of this hub can be improved by creating a stronger connection between the Community Hall and the park adjacent. Presently this connection is cut by a driveway to the Shire Depot behind the Community Hall. As there is another entry to the Depot from the rear of the property, community safety and amenity would be greatly improved by closing the entry from Shamrock St. By opening a greater physical connection between the Park and Hall, further opportunities are created to strengthen this hub by improving the Community Park and the Playground Park across the road.

The following projects should be considered to improve the safety and quality of this Community Hub:

- Closure of the Shire Depot entrance on Shamrock St
- Low fencing between the road and the Playground Park
- Shade tree planting in the Playground Park
- Creation of a Community Garden & vegetable plots
- Native plantings and bush tucker plantings around the Community Hall and Park
- Seating within the Community Park

### 1.3.2 TOWN CENTRE HUB

The second community hub is located on Gibbons St and consists of a collection of different community facilities and vital resources. This hub includes the Rage Cage, Water Park, the MEEDAC building, the Nursing Post and the shop. This area is a hot spot for pedestrian crossing between the facilities of the Community Hub and the facilities of the Civic Hub discussed below. As the centre of the community and an area of heavier activity within the town it is important to prioritise pedestrian crossing to increase safety and improve connectivity between facilities either side of Gibbons St. Improvements to this area are elaborated upon in the Street Beautification section of this Strategy.

The following projects should be considered to improve the safety and aesthetic of this Community Hub:

- Visually narrowing the street through road line work
- Planted curb extensions
- Signage or road line work to indicate pedestrian priority zones
- Formalised parking
- Additional shaded seating



Photo 6 - Formalised parking with landscaped curb extension

## 1.4 CIVIC HUB

The Civic hub of Yalgoo centres around the Shire Offices and also includes the ANZAC Memorial Park, the Courthouse Museum and the Hotel. The Shire Offices are an important community and tourism port of call in addition to being the centre of local government. Renewal of this hub represents a key opportunity create a vibrant tourist stop in the centre of town in addition to improving public amenity.

The following projects will enhance aesthetic quality, public use and tourism in the Civic Hub:

- Clear and attractive signage
- Planted curb extensions
- Signage or road line work to indicate pedestrian priority zones
- Formalised parking
- Formal bus stop and shelter in proximity to public toilets
- Additional shaded seating
- Landscaping and seating in front of the Hotel



Photo 7 – Formal bus shelter/tourist rest stop design

## 1.5 VISITOR INFORMATION BAY

Yalgoo's visitor information resources are presently split between a poorly signed and aged information bay on Plesse St, the Caravan Park and the Shire Offices. The information bays position beside the fuel depot makes it an ideal location from which to funnel tourists travelling between Geraldton and Mt Magnet into Yalgoo. A redesign around the visitor bay signage and amenity should make visitors want to stop long enough to read about the town and want to visit. This could be achieved with:

- Attractive shaded seating
- Differentiating between fuel lanes and visitor parking
- Attractive planting design
- Clear and attractive information boards
- Artwork that is interpretive of the local culture or history

Revitalising this area should also form part of the strategy for traffic calming along Plesse Street. Creating a visitor hub here is another way to increase the visibility of Yalgoo to motorists and reinforce the fact that drivers are passing through a town and not by it.



Photo 8 – Interpretive signage and art, Perenjori rest stop

## 1.6 WALK TRAILS

One of the key environmental outcomes in the Yalgoo Strategic Community Plan is the development of 'eco' and indigenous heritage trails for tourist use. The development of a trail system also has social and health benefits for the local population. Community consultation identified a desire for a recreation trail and improvements to the existing Heritage Trail.

Recreation and Heritage Trail development should incorporate the following:

- Clear signage
- Cultural, built and natural heritage interpretation
- Shaded rest stops
- Routes that avoid crossing roads
- Outdoor exercise equipment stations
- Sections of varying length

Trails should also make use of existing informal tracks, firebreaks and unsealed roads to avoid environmental damage and allow easy maintenance access. Strategies and possible trail routes are detailed in Section 4 Trails.



Photo 9 – Natural & built heritage interpretation



Gibbons St entrance to Yalgoo



# [2]

## Street Improvements

- 2.1
- 2.2
- 2.3
- 2.4
- 2.5
- 2.6
- 2.7

- About
- Seating
- Shade
- Greenery
- Improved & Continuous Footpaths
- Safe Crossing Points
- Reduced Traffic Speed

# [2] Street Improvements

## 2.1 ABOUT

Yalgoo, like many regional towns is characterised by very wide streets. Whilst this contributes to the relaxed nature of the town, the streets as they are do not support the needs and desires of the community. Improvements such as those listed below will assist in encouraging more walking and hopefully improve the health of residents as a result.

The following areas need to be addressed when planning improvements for the streetscape and public open space:

- Seating
- Shade
- Greenery
- Footpaths
- Safe crossing points
- Reduced traffic speed

## 2.2 SEATING

There is currently very little seating in town. Additional seating will encourage people to walk more as they are able to rest at intervals, particularly in the hot months. Seating needs to be provided at regular intervals along Gibbons Street and should be associated with shade – either shade structures or trees. Seating may take the form of boulders, stone walls or in some instances, standard bench seats with backs. Groupings of seating elements should be included, particularly in association with community areas.

Shaded seating areas are also proposed along the heritage and walk trails.

## 2.3 SHADE

The lack of shade in the main street particularly makes for an uncomfortable walking environment. The main street plan proposes a number of shade structures to provide shade until such time as there is increased tree canopy. These shelters could be custom built in town, with an integrated approach to design utilising artists from the community. An economical and simple approach would be to utilise a 'bus shelter' style shade structure at intervals, with associated seating.

The bus stop itself needs to be clearly delineated and shade provided for both drop off and pick up. Colourful, temporary shade structures, such as umbrellas associated with the shop and the pub would make a positive contribution to the streetscape and would draw visitors into the town.



Photo 10 - Existing: View down Shamrock St, Yalgoo



Photo 11 - Proposed: Informal stone seating

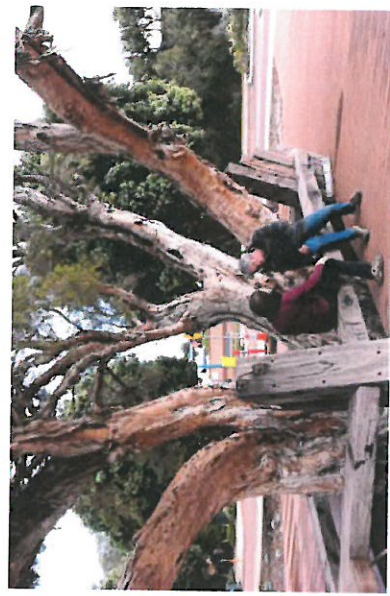


Photo 12 - Proposed: Shaded bench seating

## 2.4 GREENERY

The town has an adequate water supply and the existing mature trees in town suggest that with attention and water, it would be possible to create a much greener town through increased tree planting. Local tree species that have proven to be successful should be utilised. In addition, some fruit trees could be planted in association with community areas, such as the proposed community garden.

Grassed areas require considerable water and maintenance and should be restricted to a couple of key locations. The provision of a couple of small areas of well maintained grass can provide a cooling effect in town. It also encourages visitors to the town to stop and relax, which helps to support local business.

## 2.5 IMPROVED & CONTINUOUS FOOTPATHS

Even and continuous footpaths are an essential part of pedestrian safety and accessibility. They are also integral to the mobility of people using strollers and wheelchairs. Footpath connectivity also plays a key role in reducing car dependence for short trips to the shop or to school. With a reduction in car use and an increase in exercise, the Yalgoo community receives both economic and health benefits.

Footpaths may be concrete extensions akin to the existing paths or they can be created by reconfiguring Yalgoo's expansive bitumen road surface. This can be achieved through road line work, curb island extensions or various physical interventions that separate pedestrians from cars and utilise the road shoulder as a footpath.

## 2.6 SAFE CROSSING POINTS

Both Plesse and Gibbons St experience large vehicle traffic in the form of trucks moving between Geraldton and Mt Magnet and passing through town to and from mines to the north. Creating priority zones for pedestrians increases safety and offers an opportunity for landscape intervention. Crossing points should be a combination of road line work, signage, road surface texture change or curb extensions. They should be created in conjunction with other traffic calming strategies and landscaping plans to ensure continuity and readability for both drivers and pedestrians.

Pedestrian refuge points should be considered on Plesse street to increase safety and provide visual cues for motorists.



Photo 13- Proposed: Plantings at Perenjori rest stop



Photo 14 - Proposed: Turning the road shoulder into a footpath

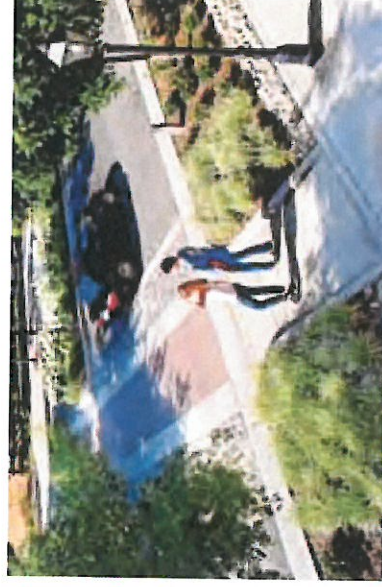


Photo 15 - Proposed: Planting & textured pedestrian crossing



## 2.7 REDUCED TRAFFIC SPEED

Traffic calming measures have the potential to not only increase safety but to enhance the beauty of Yalgoo's streetscapes. Physically narrowing and altering road layout helps to increase driver attention and decrease speeding. Measures can include road line work, curb extensions, chicanes, speed humps and tall verge plantings that help to visually narrow the road. These devices can be used in combination to create attractive, greener and safer streets that offer a much improved pedestrian environment.



Photo 16 - Traffic calming islands and road line work



Photo 17 - Planted curb extension

## 2.8 STREET IMPROVEMENT PLANS

The following plans set out the proposed changes to the Town Entry and Main Street. A number of these proposals are as a result of community consultation and are proposed to leverage the existing assets of Yalgoo and to enhance.

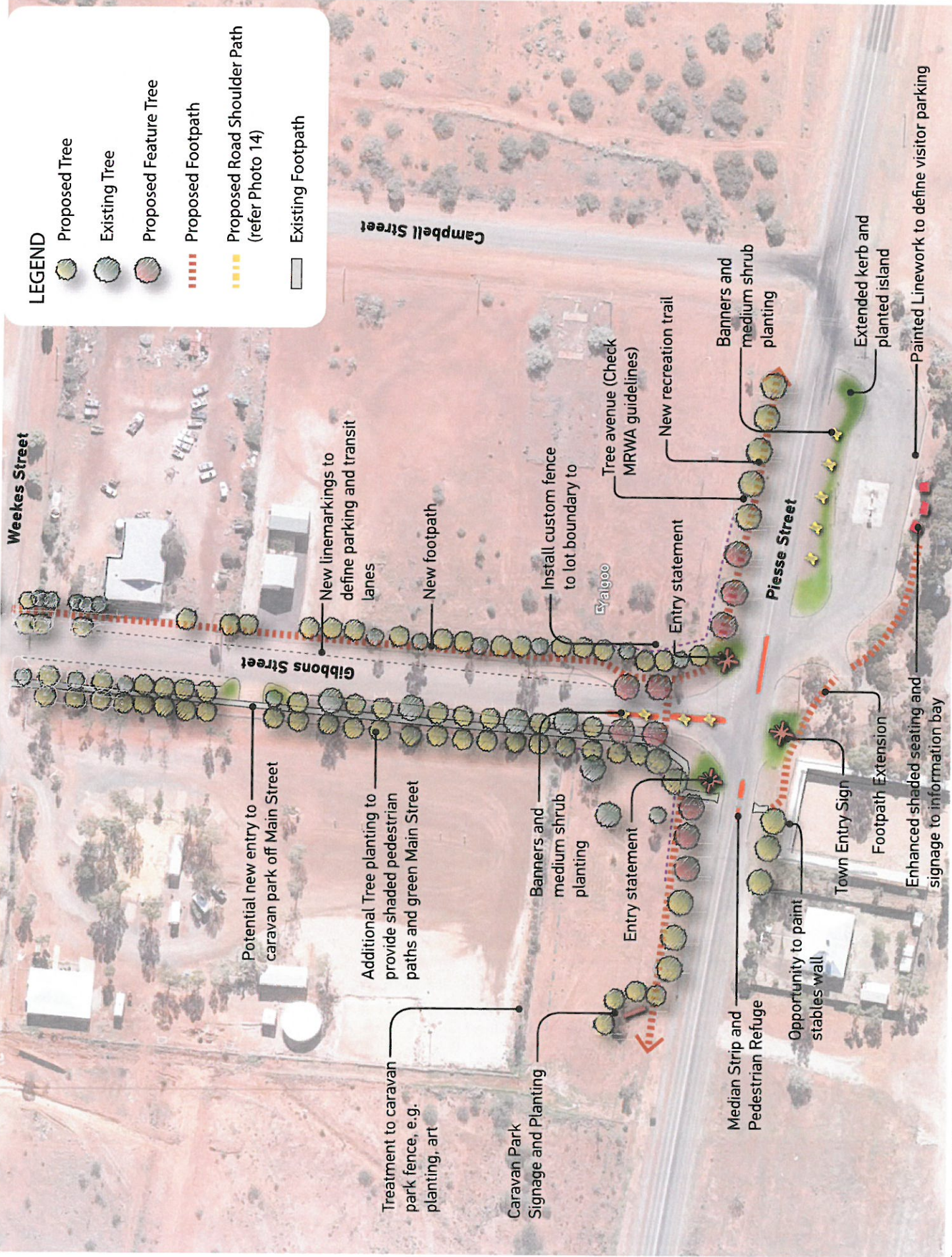
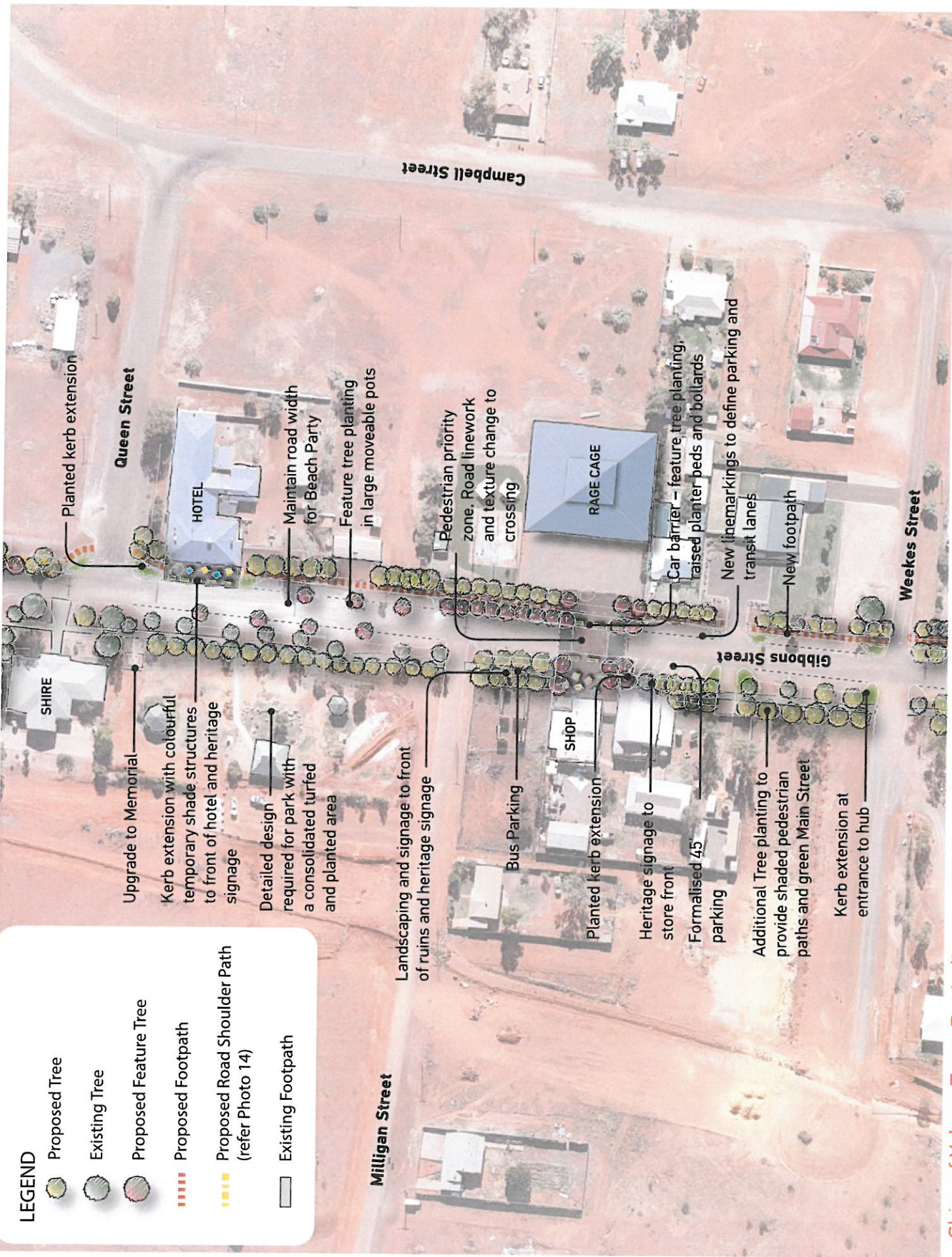








Image 1 - Town Entrance and Information Bay



**LEGEND**

-  Proposed Tree
-  Existing Tree
-  Proposed Feature Tree
-  Proposed Footpath
-  Proposed Road Shoulder Path (refer Photo 14)
-  Existing Footpath

Upgrade to Memorial

Kerb extension with colourful temporary shade structures to front of hotel and heritage signage

Detailed design required for park with a consolidated turfed and planted area

Planted kerb extension

Maintain road width for Beach Party

Feature tree planting in large moveable pots

Landscaping and signage to front of ruins and heritage signage

Bus Parking

Planted kerb extension

Heritage signage to store front

Formalised 45 parking

Additional Tree planting to provide shaded pedestrian paths and green Main Street

Kerb extension at entrance to hub

SHIRE

HOTEL

RAGE CAGE

SHOP

Milligan Street

Queen Street

Gibbons Street

Weekes Street

Campbell Street

Pedestrian priority zone, Road linework and texture change to crossing

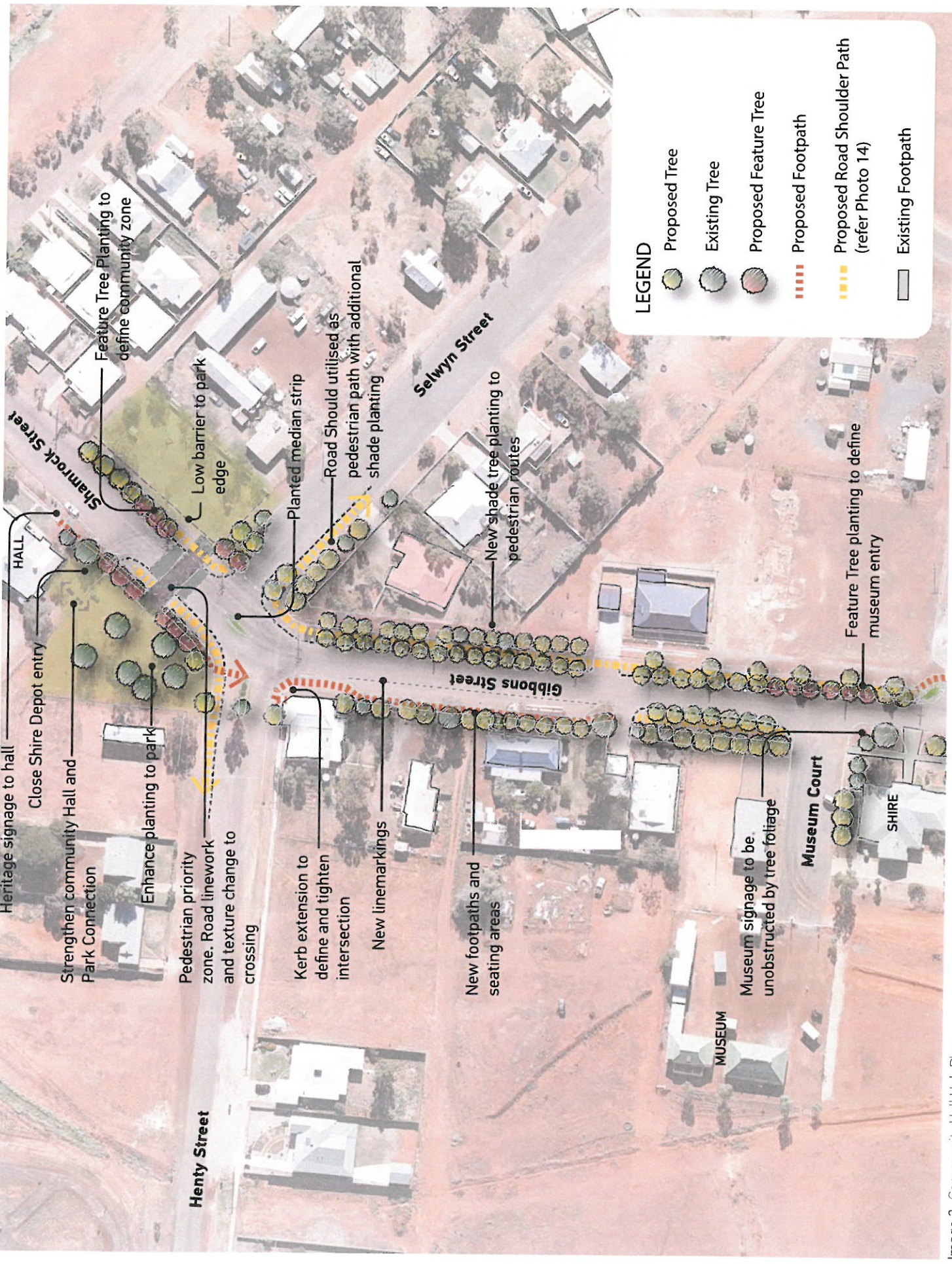
Car barrier - feature tree planting, raised planter beds and bollards

New linemarkings to define parking and transit lanes

New footpath

Shire of Yalgoo Town Revitalisation Strategy- 2014

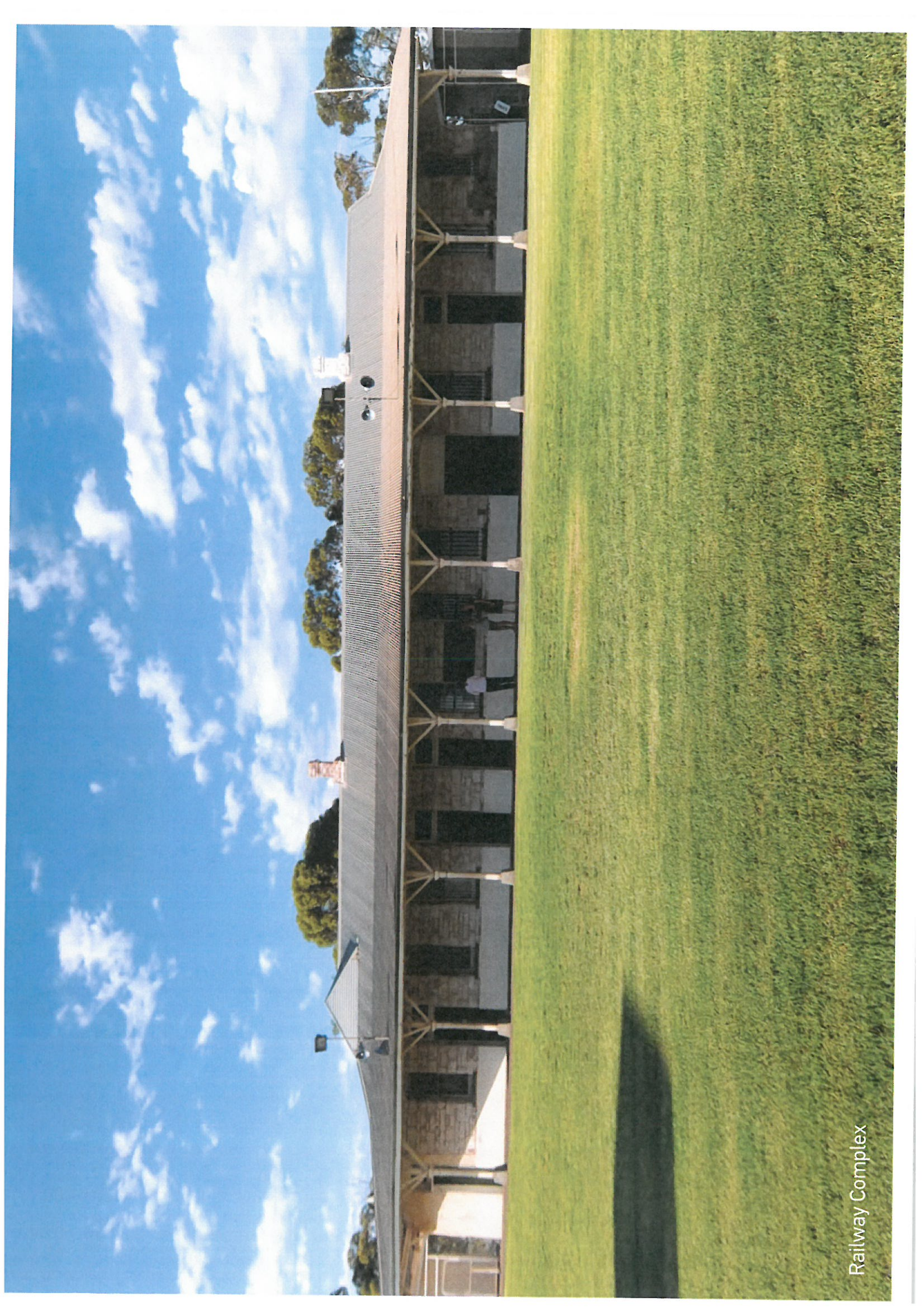
Image 2 - Civic Hub and Town Centre Plan



**LEGEND**

- Proposed Tree
- Existing Tree
- Proposed Feature Tree
- Proposed Footpath
- Proposed Road Shoulder Path (refer Photo 14)
- Existing Footpath

Image 3- Community Hall Hub Plan



Railway Complex



# [3]

## Recreation and Community Facilities

### 3.1

3.1.1

3.1.2

### Recreation

Sports Oval Site Options

Tennis Court Site Options

### 3.2

3.2.1

### Community

Community Garden Site Options

# [3] Recreation & Community Facilities

## 3.1 RECREATION

Yalgoo is endowed with a numbered of well-used recreational facilities of various quality. These include the following:

- The Yalgoo Race Course
- The undercover sports facility (The Rage Cage)
- The Water Park
- The Golf Course & Cricket Pitch
- The School Oval, Sports Court and bike course

One of the key social outcomes in the Yalgoo Strategic Community Plan 2013-2023 is the development of a new sports oval. The Shire has also expressed the desire to incorporate any other sporting facilities, such as the cricket pitch, into the same location as a new oval in order to consolidate maintenance and sporting activity.

Locations for a new oval were discussed during consultation as was the desire for reinstatement of the tennis courts. Both would require significant infrastructure and landscaping and should be sited within proximity to existing recreational facilities in order to consolidate activity centres and make use of existing amenities like toilets, water and shade access.

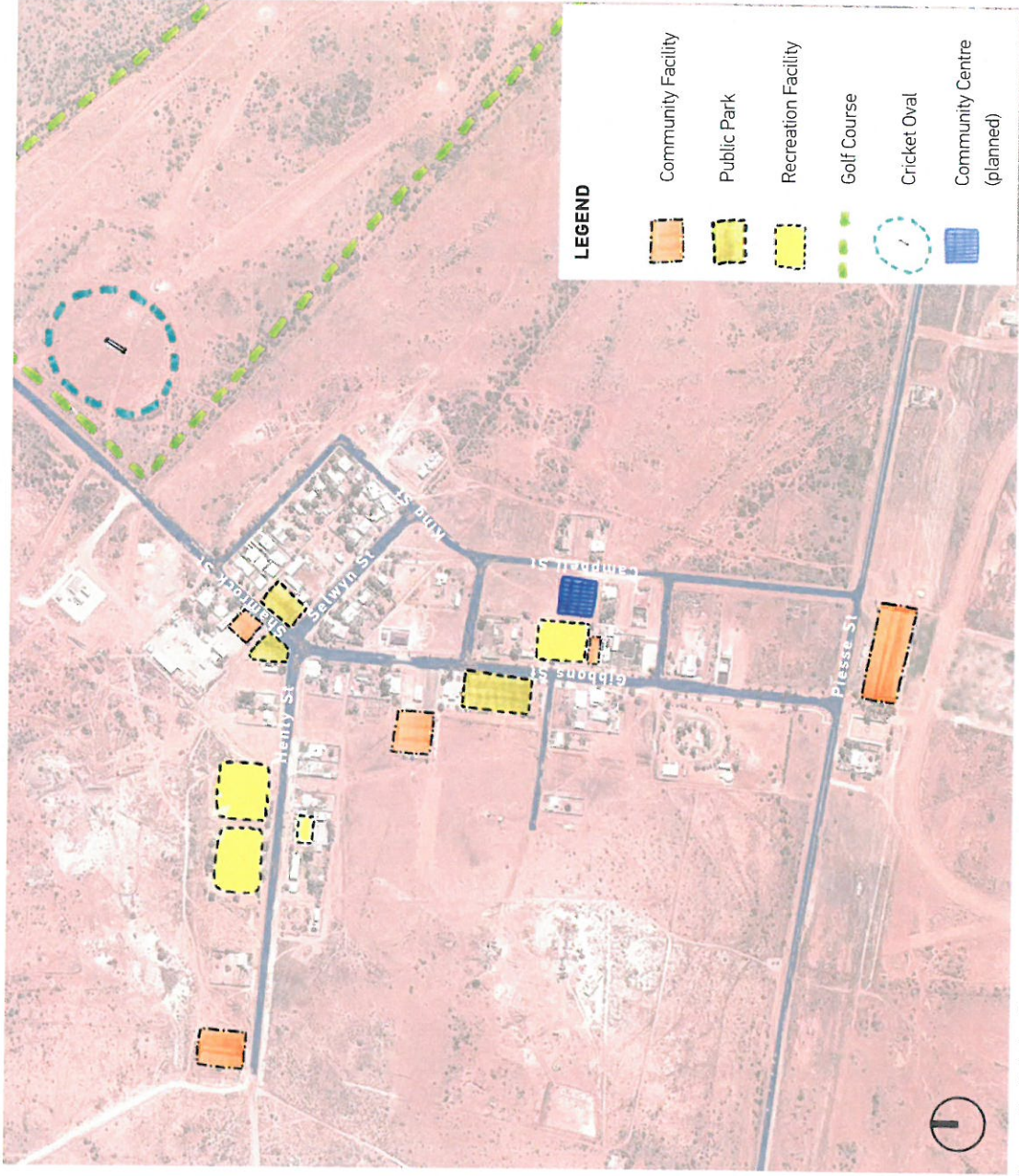


Image 6 - Existing Recreation & Community Facilities Locations

### 3.1.1 SPORTS OVAL SITE OPTIONS

Two options have been identified in this strategy for location of a new football oval. These locations take into account a small oval size (for males aged 13-17) of 135m x 110m.

#### 1. Primary School

Consolidate a new oval with the school. Placing a new oval behind the school will enable easy access for students during school hours and existing infrastructure at the school can be extended in order to extend water and lighting to the oval. This land is also currently gazetted as recreation under the Yalgoo Local Planning Strategy. Public vehicle access to the site could be extended off Henty Street.

#### 2. Campbell/King St

Locate the oval near the junction of Campbell and King Street. This location would form part of a new consolidated recreation and community precinct that would include locating the tennis courts and a community garden adjacent to the planned Community Centre on Campbell Street.



Photo 18 - Recreation Facilities: The Rage Cage & Water Park

### 3.1.2 TENNIS COURT SITE OPTIONS

The tennis courts in Yalgoo used to be a popular recreational facility allowing the local and adjacent communities to socialise in the day and evening. The nets and fence were removed during construction of the Rage Cage.

The current location for the tennis courts is at the front of the Rage Cage on Gibbons Street. There is a potential to reinstate the courts in this location as the footprint and hard surface are still there. However, this location would cater to one court only. It would also result in hindered access and obscured views to the undercover sports facilities. Furthermore, this location would disrupt pedestrian flow from Gibbons St through to the planned Community Centre.

It would be advantageous to relocate the courts to the site adjacent the Community Centre in conjunction with any plans to locate a new football oval on Campbell Street.



Photo 19 - The Cricket Pitch



## 3.2 COMMUNITY

The Yalgoo community are highly active and have access to a number of community facilities which receive varying levels of use. These include:

- The Railway Station Complex
- The Community Hall
- The MEEDAC Building
- The Courthouse Museum
- The Dominican Chapel of St Hyacinth
- The Old Railway Station

A consultation and design process has already been undertaken for a new Community Centre which is planned to front onto Campbell Street in proximity to the Rage Cage and Water Park. Additional existing facilities for recreational and community use include the Town's public parks, of which there are three:

- The ANZAC Memorial Park (includes ANZAC memorial, toilet block & picnic shelter)
- The Playground Park (corner of Selwyn & Shamrock. Includes children's play equipment)
- The Community Park (corner of Henty & Shamrock. Previously landscaped by residents)

This community consultation has identified a desire by the adults within the community for an enclosed community garden to create an area of respite and the ability to grow food. This facility would require access to water and potentially fencing and should be located in proximity to other community facilities for activity consolidation purposes or near the residential area for ease of access.

### 3.2.1 COMMUNITY GARDEN SITE OPTIONS

In this strategy we have identified four potential locations for a new community garden.

#### Community Hall Hub

Place the garden in the Community Park next to the Hall. This would strengthen the already existing community facilities in this area. This location is within easy access of the Community Hall and main residential area and would improve passive surveillance over the children's playground across Shamrock Street. It would also help to reactivate this small park which was reportedly planted by Yalgoo residents and which present residents identified a desire to improve.

#### Anglican Church

Locate the Community Garden within the grounds of the Shire owned Anglican Church. This location would make use of a currently neglected community asset and heritage site. It could also lead to future renovation and use of the Church building for Community Garden related events and education programs.

#### Civic Hub

Re-design the ANZAC Memorial Park to incorporate a community garden. This location has the advantage of being already connected to irrigation and allows access to the public toilets. The area is also adjacent to the Shire Offices and is highly visible from Gibbons Street. Inclusion of a garden here would help to strengthen passive surveillance in the park and has the potential to improve its attraction to tourists.

#### Community Centre

Construct the community Garden in conjunction with the landscaping of the planned Community Centre therefore consolidating a number of community facilities together into a hub including the Water Park, Rage Cage and a new tennis court.

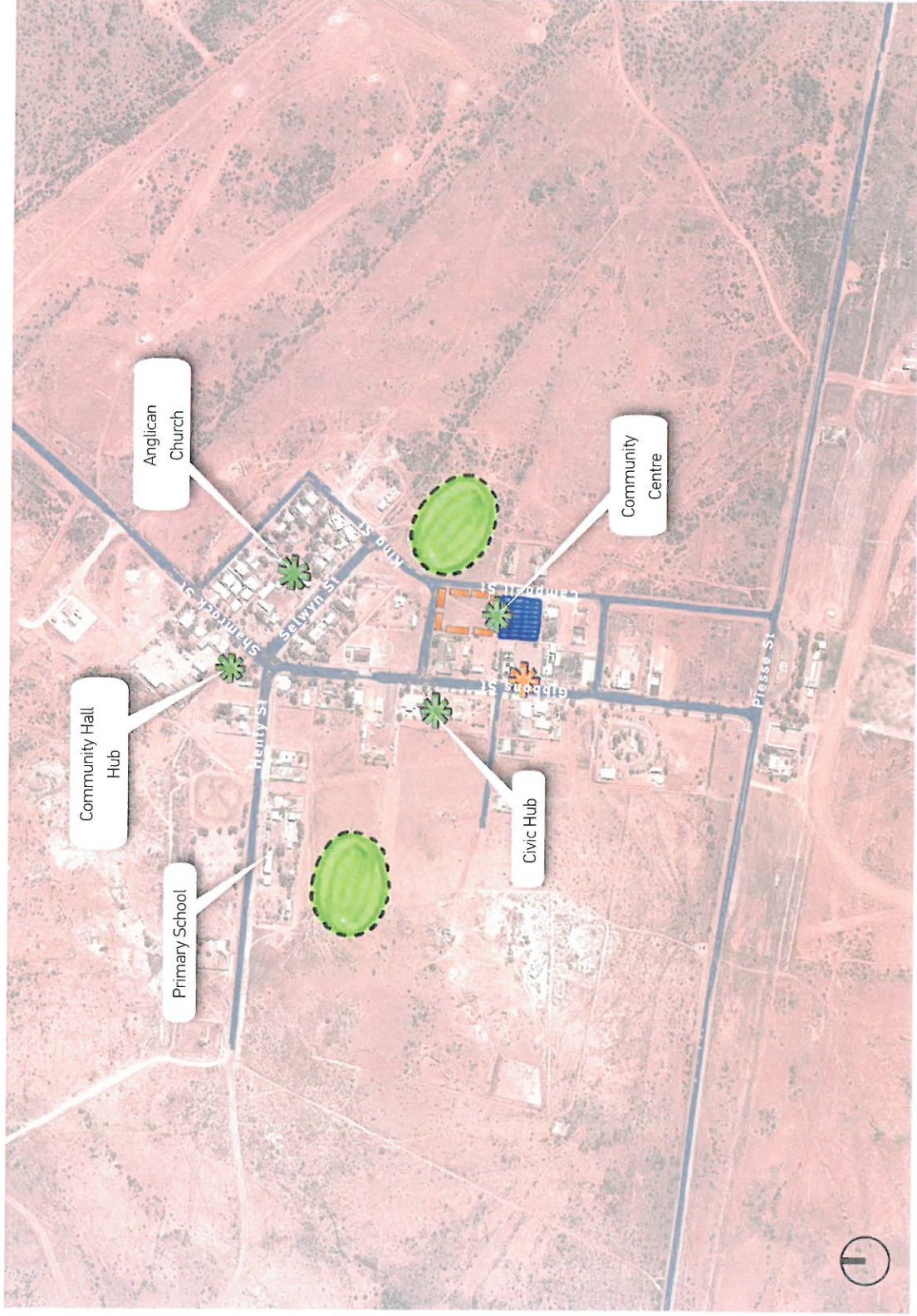
Another location has been identified by the Shire 1.5km from town on the unsealed road extending from the end of Henty Street. This location has a well but is not easily accessible and presents problems for surveillance of the garden.



Photo 20 - Ainslie Parklands Primary's bush tucker garden



Photo 21 - An Adelaide primary school's kitchen garden

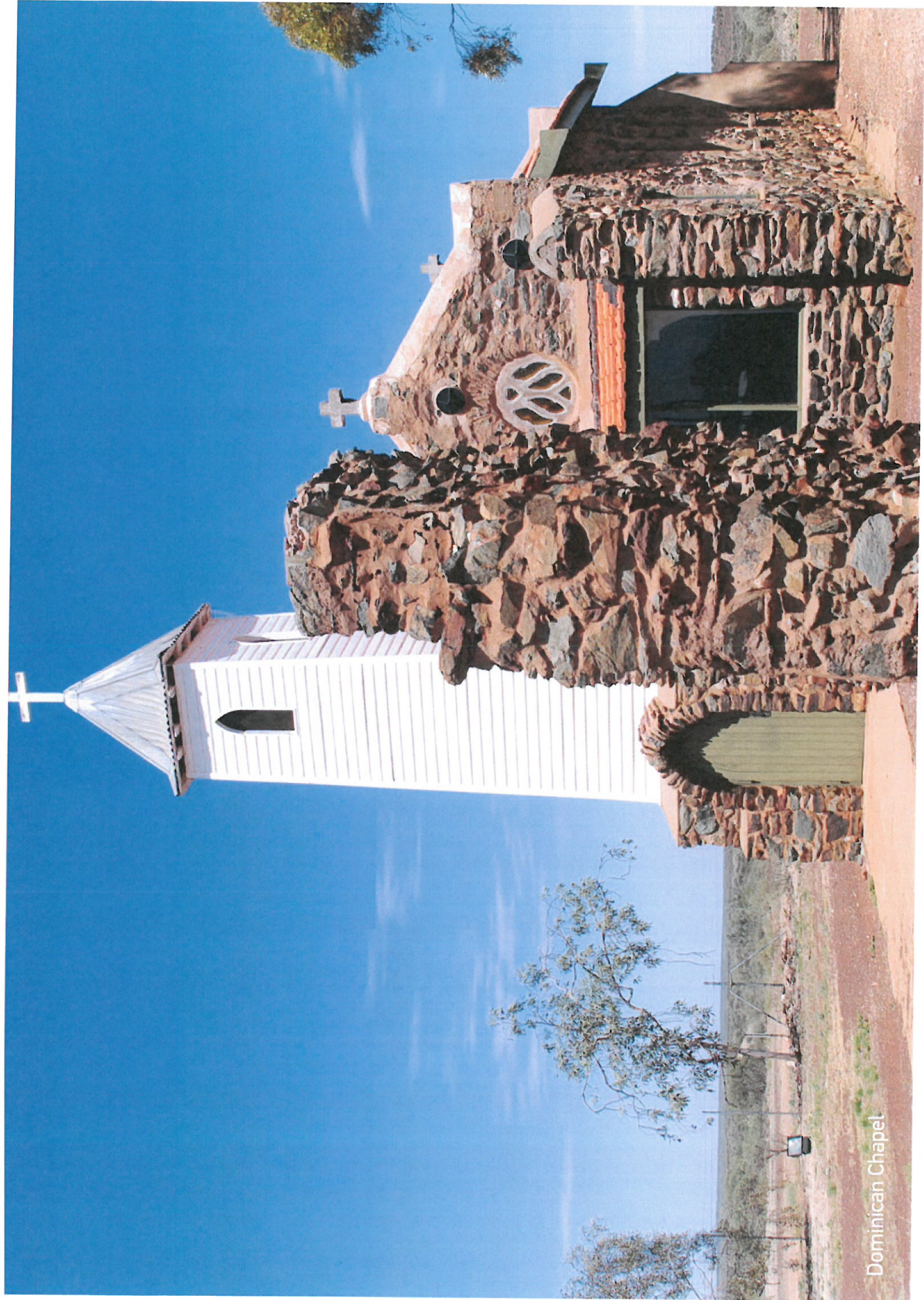


**LEGEND**

-  Community Garden Option
-  Football Oval Option
-  Tennis Court - Original Site
-  Tennis Court Option
-  Community Centre (Planned)



Image 7 - Recreation & Community Facilities Location Options



Dominican Chapel

# [4]

## Trails

### 4.1

4.1.1

4.1.2

### Recreation & Fitness Trails

Trail Precedent

Opportunities

### 4.2

4.2.1

4.2.2

### Heritage Trails

Trail Precedent

Opportunities

## [4] Trails

### 4.1 RECREATION AND FITNESS TRAILS

One of the key environmental outcomes in the Yalgoo Strategic Community Plan 2013-2023 is the development of 'eco' and indigenous heritage trails for tourist use. However, the development of a trail system also has social benefits for the local population.

Presently there are no formal recreation or fitness trails in Yalgoo. Many informal tracks, fire breaks and unsealed roads exist in and around the town and are used for recreation including cycling and motocross. However, these trails are underutilised by Yalgoo's residents and visitors due to a lack of amenity and signage.

Community consultation identified a desire for more recreational facilities for adults such as outdoor exercise equipment and walking trails. It was also identified that amenities were needed to support adult recreational activity. For example, the provision of shaded seating along paths and trails was seen as an incentive to walk as it would allow the user to stop and rest when needed. In addition, clear signage and routes that avoid the need to cross roads are conducive to creating better conditions for pedestrians and cyclists. Furthermore there is a need to create safer recreational trails for children that direct them away from problem areas like Piesse Street, the mine tailings and the old water reservoir.

### 4.1.1 TRAIL PRECEDENT

#### Canberra Centenary Trail

The Canberra Centenary Trail leads through both urban and rural areas and follows fire breaks, walking tracks and shared paths. It was designed to be a highly accessible but low intensity walking trail that takes in iconic sites, farmland, nature reserves and parks. An interpretation program was developed in conjunction with the trails design to enrich the user experience. The interpretation strategy included signage, trail map content and a website. Landscaping elements on the trail are simple and robust whilst sitting well within their surroundings. Signage and artworks are also simple and clearly communicate information and way-finding.

### 4.1.2 OPPORTUNITIES

Yalgoo's attractive natural landscape features, topography and multiple existing tracks offer the opportunity to develop a number of interlinking recreational trails that can cater to different user needs and levels of fitness. The following plan indicates potential trail paths of varying length and physical challenge that for the most part utilise existing unsealed roads, tracks and firebreaks whilst connecting the town's iconic landscape and natural and built heritage features.

The design for a recreation and fitness trail should include the following:

- Clear signage that compliments the landscape

- Formal and informal shaded rest stops at regular intervals
- Routes that avoid crossing roads
- Journey time and distance indicators
- Outdoor exercise equipment stations
- Sections of varying length catering to different users and levels of fitness

Well signed and maintained trails linking Yalgoo and the town's natural surroundings will enhance the recreation experience of both residents and visitors. In addition, formal trails will help to protect sensitive areas of natural vegetation whilst allowing trail users to appreciate them.

Furthermore, creation of a signage and interpretation plan is an opportunity for inclusive community design. Engaging residents in a process of participatory design helps to empower the community and build their sense of ownership and stewardship of new landscape projects.

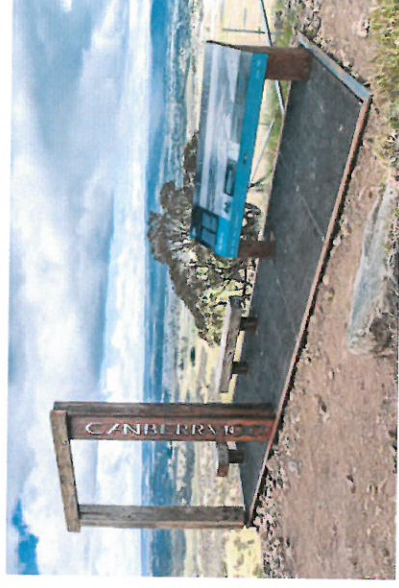


Photo 22 - Canberra Centenary Trail Look-out



**LEGEND**

- Around Town Loop
- Lookout Trail
- South-west Trail
- Golf course Trail
- Race Course Trail
- ↔ Road Crossing
- ☼ Point of Interest
- ☼ Formal Rest Stop
- ☼ Informal Rest Stop

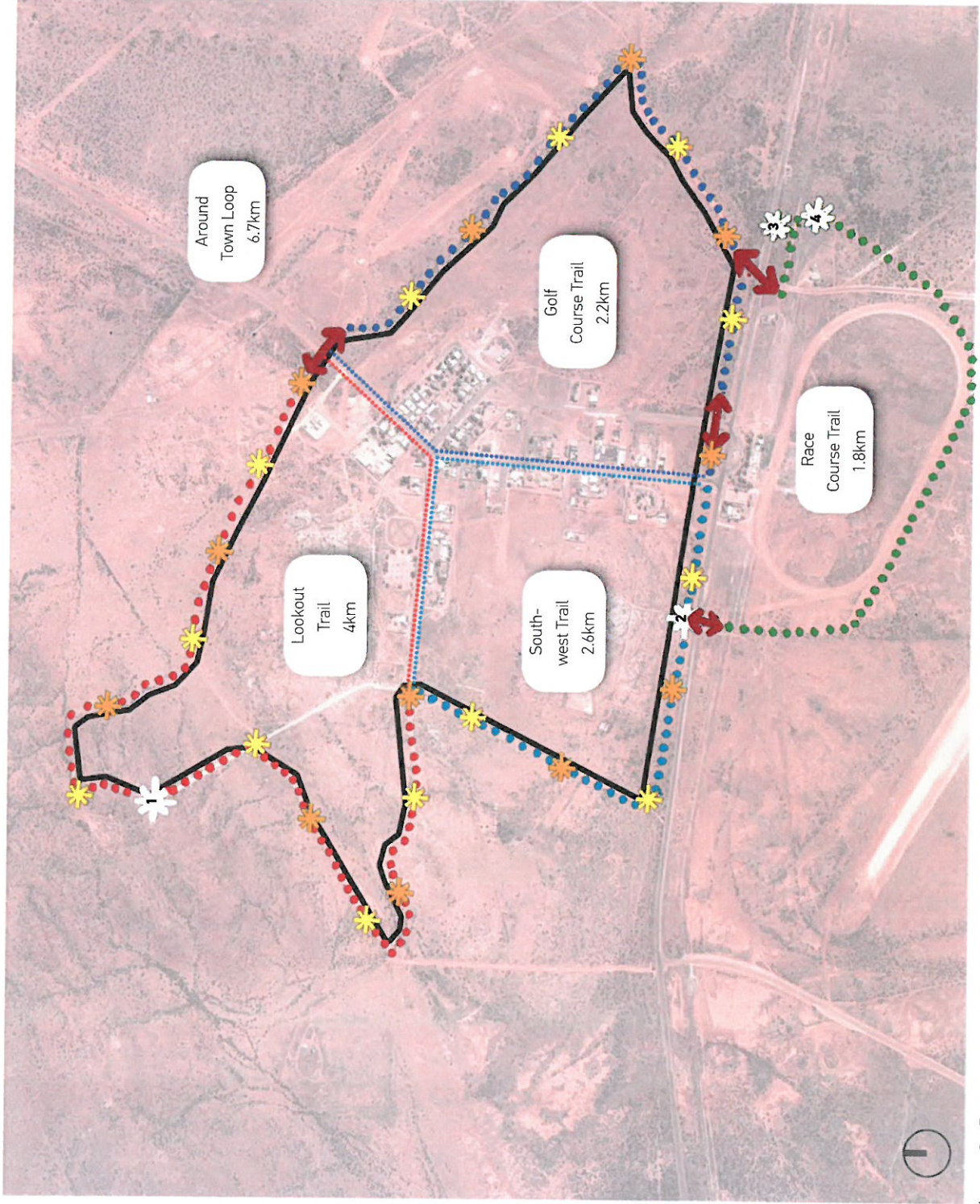


Image 8 - Recreation Trail Plan





## 4.2 HERITAGE TRAIL

The existing Yalgoo Heritage Trail was produced in conjunction with the Heritage Council of Western Australia. A comprehensive guide to the trail exists but is not well marketed. Signage and interpretation exist throughout the town at heritage sites and buildings. These signs are highly faded and need to be replaced with a more physically robust design to withstand harsh weather conditions.

The Aboriginal cultural heritage of the area is not celebrated in the present Yalgoo Heritage Trail and should be included in future heritage strategy plans.

### 4.2.1 TRAIL PRECEDENT

#### Halls Creek Heritage Town Walk

The Halls Creek Heritage Town Walk follows a trail of hand painted and sculpted signs interpreting local history and culture. The Heritage Town Walk takes approximately 40 minutes and connects to a 3km and a 5km walk trail beyond the town. The trail includes a restored trackers hut, community artwork and bush tucker gardens and provides education on the areas rich history to both locals and visitors. The trail was designed in conjunction with the community and Halls Creek Shire.

### 4.2.2 OPPORTUNITIES

Yalgoo has a rich built, natural and cultural heritage that needs to be better interpreted and marketed to benefit the community and visitors. A new heritage

interpretation strategy and heritage trail should be developed and designed in consultation with the community and should incorporate the following:

- Cultural, built and natural heritage references
- Clear, robust signage that compliments the landscape
- Artwork interpreting local culture and history
- Landscaping of important sites
- A revitalised Heritage Trail guide

In addition, the opportunity exists for the trail to include a revitalisation of the community park next to the Town Hall to include and display plantings of edible and endemic species from the Yalgoo area along with informative signage. This type of community garden helps to celebrate both the natural and cultural heritage of an area and can serve as an educational tool for the community and visitors.

Furthermore, the creation of the Heritage Trail presents another opportunity for meaningful community engagement and participatory design. The end product of this will be a richer and more informative Heritage Trail that benefits both the local population and tourists.



Photo 26 - Halls Creek Heritage Town Walk signage artwork

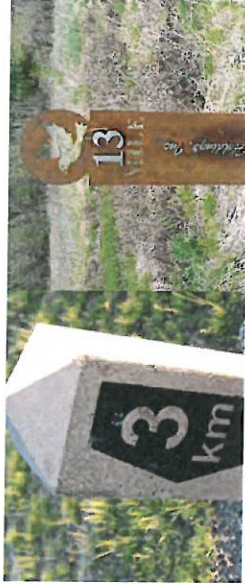


Photo 23 - Distance indicators



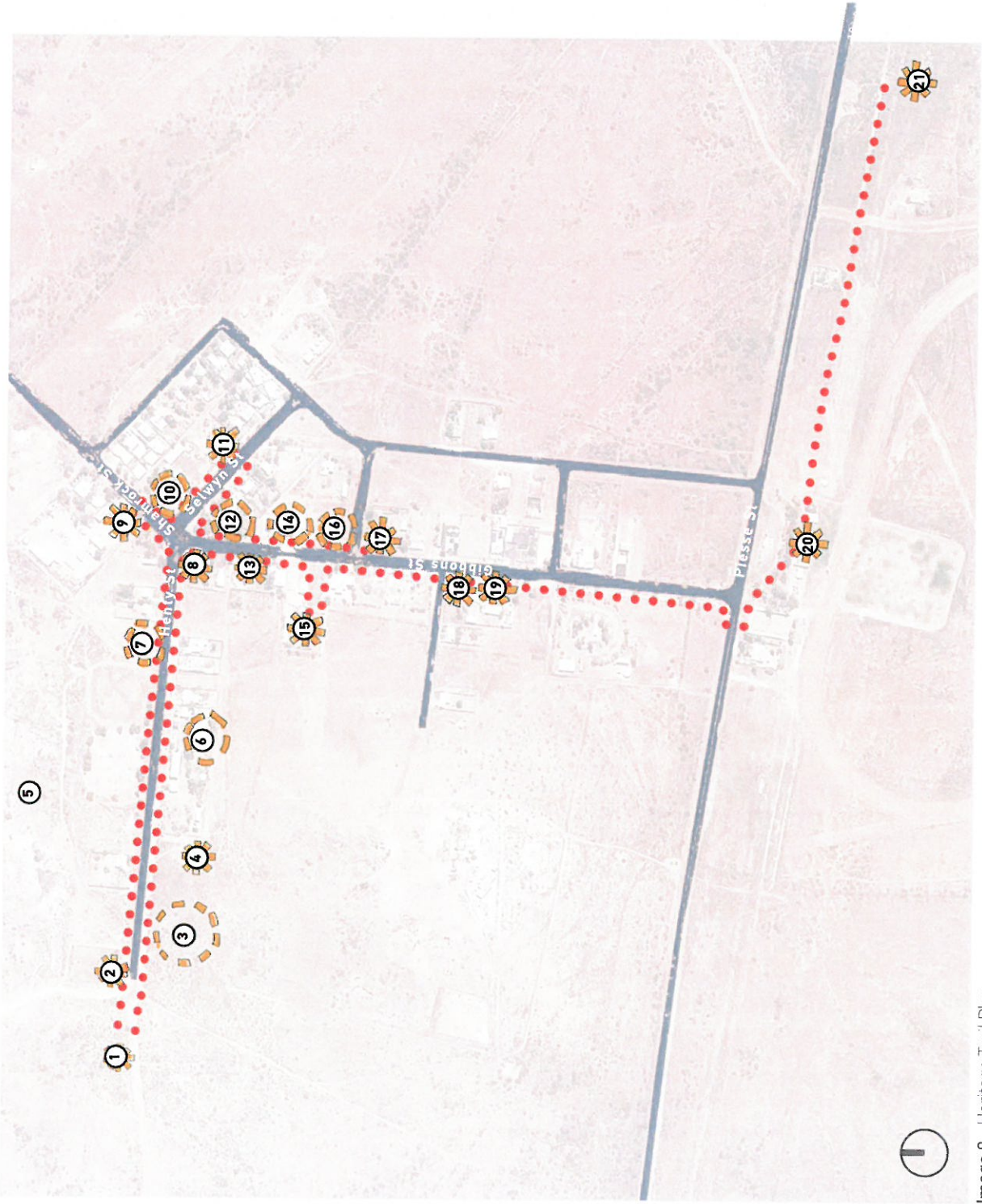
Photo 24 - Directional Trail Markers





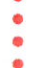
Photo 25- Heritage Signage



Photo 27 - Interpretive Cultural Signage



**LEGEND**

-  Heritage Structure
-  Heritage Site
-  Heritage Trail

1. Grave Site
2. Dominican Chapel
3. Site of Tent Hospital
4. Ruins of Emerald Hotel
5. Site of Emerald Mine
6. Site of the Yalgoo District School
7. Site of the Holy Saviour Catholic Church
8. Former Jack Neville's Store
9. Yalgoo Shire Office & Hall
10. Site of Cumberland Hotel
11. Anglican Church
12. Site of Club Motel
13. Former Police Station
14. Site of Former Store
15. Court House Museum
16. Site of Commercial Hotel
17. Yalgoo Hotel
18. Ruins of Solomon Lowin's Residence/Store
19. Former Pioneer Store
20. Railway Station Precinct
21. Railway Water Tower



Image 9 - Heritage Trail Plan



Yalgoo Caravan Park

[5]

NEXT STEPS

## [5] Next Steps

**1** Shire endorsement of the Yalgoo Town Revitalisation Strategy

**2** Shire to allocate a project champion within their organisation

**3** Prioritise project list in consultation with the community

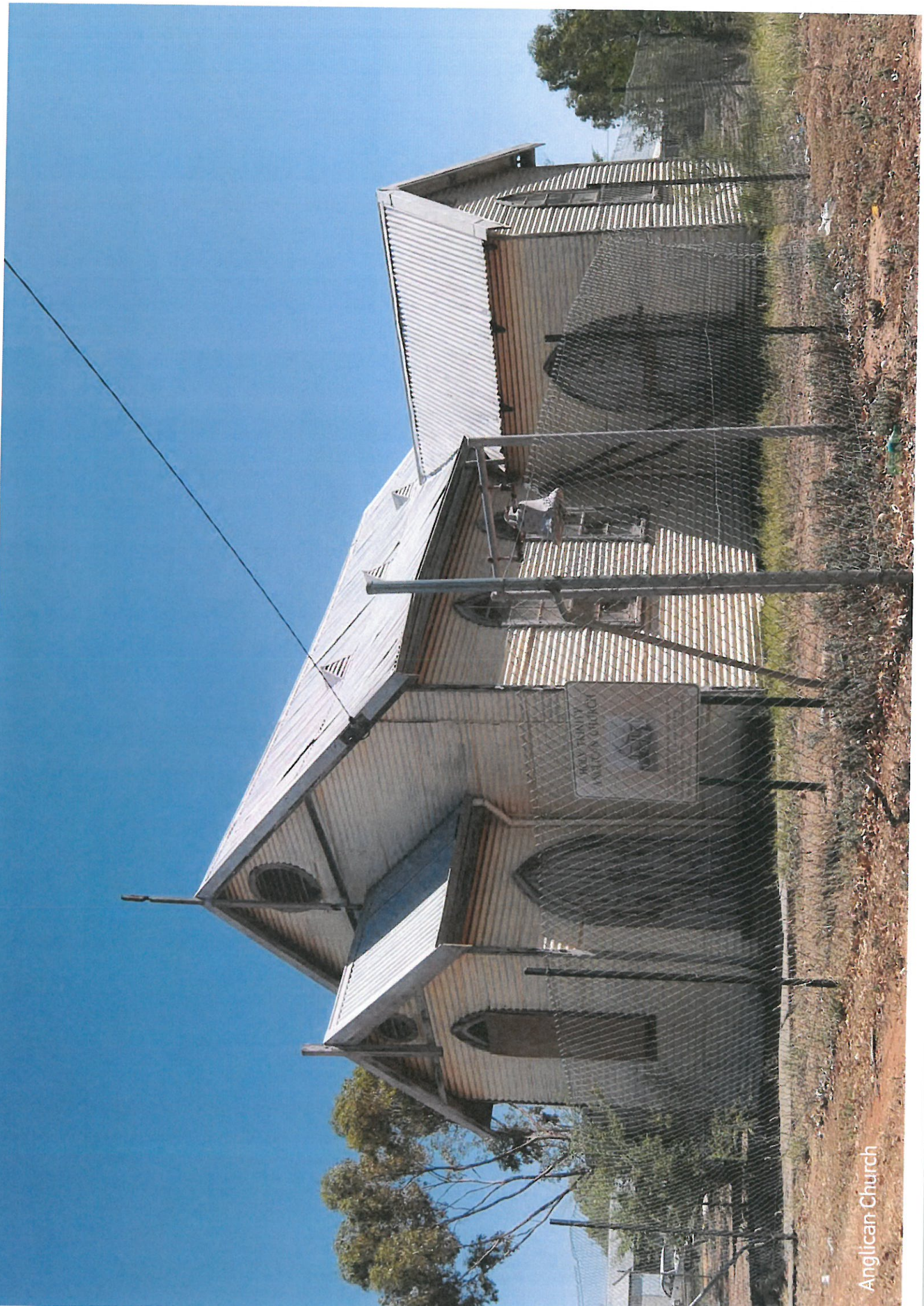


**4** Seek funding sources or partnership arrangements to deliver projects

**5** Establish a project program & a methodology for delivery

**6** Implement projects





Anglican Church



[5]

# Appendices

Appendix A - Yalgoo Consultation Summary

# Yalgoo Consultation Summary

Tuesday 4/2/14

## Investigation of Perenjori Main Street and tourist Stop

### Notes

- Main street only populated by buildings on one side. The impression of a populated main street, that calms traffic speed, is created by banners and mature trees opposite the built road side.
- Information bay is well signed with displays behind sliding doors allowing signage to be changed. Solar lighting is attached to each information and seating shelter.
- Interpretive signage and art are used along length of street.
- Empty block facing onto street is populated with old farming machinery and a wall facing onto the space is painted with art.



View down Perenjori's main street



Information Bay signage at Perenjori



Sculpture artwork

## Meeting/tour with Sharon Daishe (CEO)

### Issues Raised

- Drainage an issue at town entrance on intersection of Piesse and Gibbons St
- Roadhouse is a desire
- Nowhere to get coffee in town
- Tourists don't stop in town (seemingly no amenity)
- Walk/bike trail needed for kids and tourism
- Railway complex buildings suffering rising damp after bad restoration
- Traffic speed control: Piesse St



Old Railway complex now part the Yalgoo Racecourse: Bad restoration and rising damp problems

## Wednesday 5/2/14

### Shire meeting (Sharon Daishe-CEO, Pip Parsonson-Community Development Officer)

#### Issues Raised

- Signage and branding
- Traffic speed control: Piesse St
- Fuel Depot
- Drainage: Piesse and Gibbons St intersection
- Trail: Walk/bike
- Lifestyle blocks
- Motocross/BMX track
- Mine Tailings
- New cricket pitch/football oval
- Golf course: attraction to attraction
- Google mapping

### Women's Group meeting at Hall (Phillis, Anthea Simpson, Sondra Hodder, Carol Hall-Nurse, Pip)

#### Issues Raised

- Adult community vegetable garden desired
- Exercise/outdoor sports equipment
- Bus stop needed
- Outdoor movies
- No seating along main street
- Men's shed
- Gallery space needed



Issue mapping at women's group consultation

## Caravan Park meeting (Kerry & Albert Grieve)

### Issues Raised

- No signage
- Nothing looks open
- Toilets broken and closed
- Information bay is hidden



Information bay between Railway complex and Fuel Depot: Tired and not well signed

## Meeting with Raul Valenzuela: Store owner & Shire Deputy President

### Issues Raised

- Transient population
- Power and freight expensive

### Community Consultation & BBQ at Hall

#### Issues Raised

- Planting preferences
- Furniture preferences



From left: Sondra, Kerry and Narelle butter the community BBQ buns

Thursday 6/2/14

**Yalgoo Primary School (student mapping session)**

**Issues Raised**

- Children swimming in old dams out of town
- BMX/Go Kart track
- Pool
- Trampoline
- Children crossing Piesse St at Campbell and Gibbons intersection to ride around Racecourse



BMX trail mapping



Drawing maps of home

**Police meeting**

**Issues Raised**

- Info needed near toilets
- Drive in and straight out of town
- Clean up block of car bodies



Park containing public toilet lacks signage

**Shire meeting** (Elisha Hodder-Shire Reception, Neil Grinham-Shire President/Pastoralist @ Meka Station, Karen Malloch-Shire employee, Pip)

**Issues Raised**

- Cars reversing from shop parking a hazard to pedestrians
- Lack of seating and shade for elderly
- Small children crossing road unawares
- Sheep trucks come down main road-Shamrock Park needs fencing to stop balls going on road and children running out
- BMX track
- No adult recreation in town
- Nowhere to display art
- Bus stop and shelter needed near shop and toilets
- Rubbish bins
- Lookout needs seating with backs looking out over town, lighting
- Water: problem with mineral content/calcium
- Danger of open mine shafts around tailings
- Park at top of town has no seating or amenity
- Corner of Stanley & King St- no lighting, bad visibility, pole close to bend
- Hotel no tables on street; generator noise and visual problem; toilets visual problem
- Campbell St needs shade & lighting
- Children crossing Piesse to ride bikes around racecourse
- Railway complex info area has no grassed area (for tourists) and no displays



Shire staff meeting: Elisha Hodder and Karen Malloch survey a map of Yalgoo



**Hotel Lunch (Neil, Pip, Heather Boyd-Shire employee)**

**Conversation with barman “Slack”**

- Publican unable to observe patrons out front of pub. Increases chance of underage drinkers on premise



The front of Yalgoo Hotel lacks seating & trees but is also a blind spot for the publican

**Works men meeting (Des Hodder-Plant Operator, Tim Zubin-Gardener, Rhys Matthews-Plant Operator, Craig Hodder-Plant Operator, Craig Simpson-Gardener, Jason Hodder-Works Foreman)**

**Issues Raised**

- Need for shade on Gibbons St
- Not enough street lighting
- Heritage buildings are not maintained and need restoration
- Campbell St needs trees and lighting
- Lack of housing
- Rifle range is closed
- Motocross track
- Exercise equipment
- Water: too much calcium
- Swimming pool

Friday 7/2/14

**Shire meeting** (Sharon, Pip)

**Notes**

- Recap of consultation & meetings



Left to right: Marion Fredriksson, Jess Ledger (Urbis consultants), Sharon Daishe (CEO) & Belinda Foster (Urbis consultant)

**MEEDAC meeting** (Phillis, Margaret Simpson, Charmaine & daughter Vina)

- Introduction to MEEDAC users and community function of MEEDAC building

## Key Issues Summary

### Piesse St:

- Traffic speed is 80km
- Large trucks passing through
- Children crossing
- Signage leading into town unclear
- Mainroads restrictions
- Too little built form or plantings to enclose the street
- Lack of rubbish bins

### Gibbons St:

- Children crossing
- Wide unmarked road
- No seating
- No marked bus stop

### Tourism:

- Information bay is not clearly identified
- Signage to historic sites need replacing/renewal
- Nowhere to get coffee
- Everything looks closed

### Campbell St:

- No shade
- No street lighting

### Look out:

- No comfortable seating taking in the view
- Visually degraded by water supply tank
- No lighting

### Hotel:

- Hard to identify if open
- No engagement with the street

### Shop:

- Hard to identify
- Parking dangerous. People backing out are a hazard to pedestrians

Parks:

- Lawn issues relating to high mineral content of water
- Shamrock St children's playground has no boundary fencing to stop balls and children going onto the road suddenly
- Park on the corner of Shamrock & Henty receives no water & has no seating

Railway complex:

- Heritage building suffering bad rising damp
- 

Museum

- Entrance is unlined Shire car park
- Sign is obscured by trees from drivers entering town



Sydney

Level 23/201, Sussex St  
Sydney, NSW 2000  
Tel: +61 2 8233 9900  
Fax: +61 2 8233 9966

Melbourne

Level 12, 120 Collins Street  
Melbourne, VIC 3000  
Tel: +61 3 8663 4888  
Fax: +61 3 8663 4999

Brisbane

Level 7, 123 Albert Street  
Brisbane, QLD 4000  
Tel: +61 7 3007 3800  
Fax: +61 7 3007 3811

Perth

Level 1, 55 St Georges Terrace  
Perth, WA 6000  
Tel: +61 8 9346 0500  
Fax: +61 8 9221 1779

Australia - Asia - Middle East  
[www.urbis.com.au](http://www.urbis.com.au)  
[info@urbis.com.au](mailto:info@urbis.com.au)

