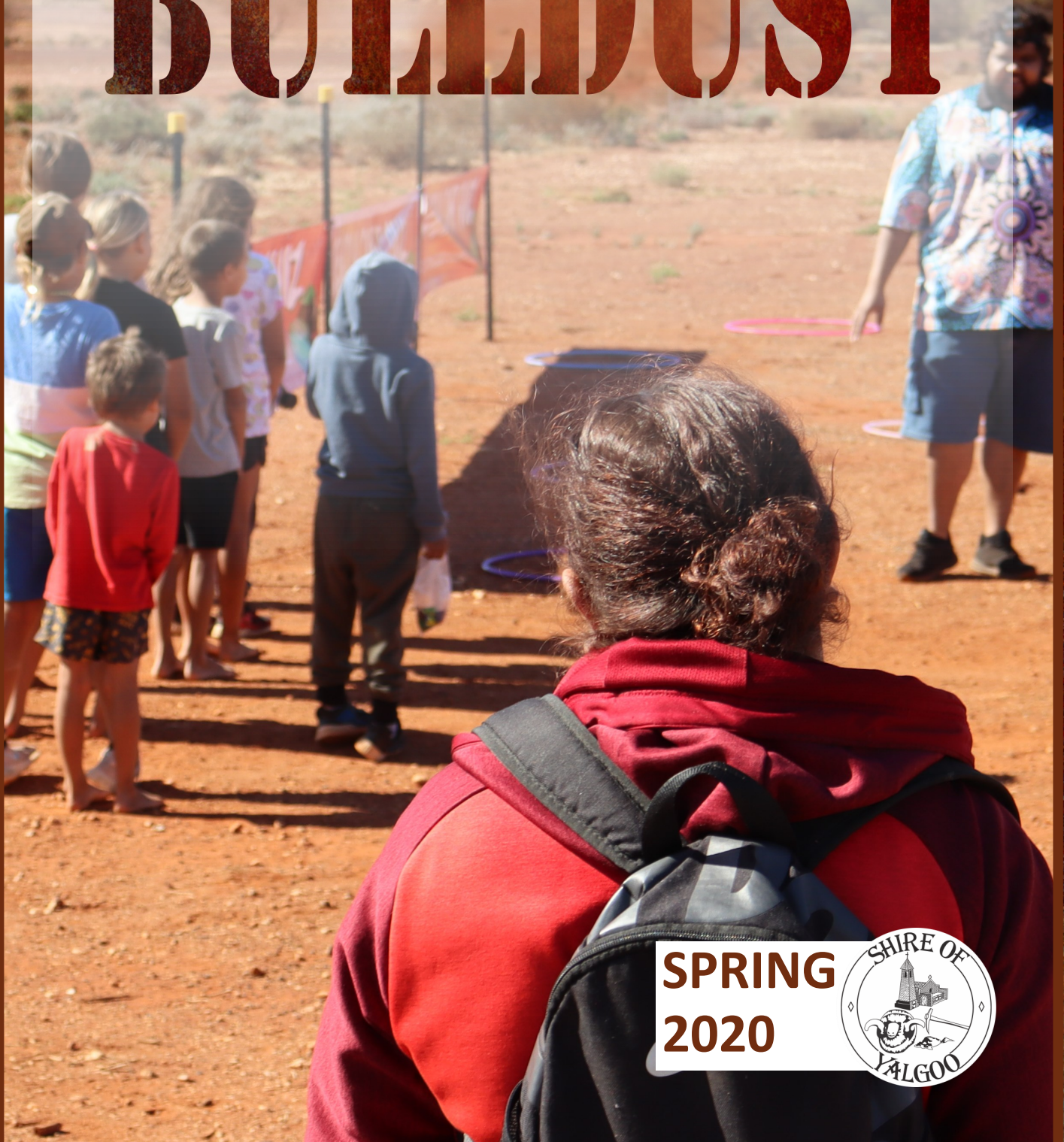


YALGOO BULLDUST



**SPRING
2020**



MURCHISON GEOREGION



**murchison
georegion**

WESTERN AUSTRALIA

*Ancient lands
Brilliant skies*

The Murchison GeoRegion is Australia's first major geotourism development

The Murchison GeoRegion is launching this month!

If you see people wandering around the Shire visiting Jokers Tunnel, Dalgara Crater or the Paynes Find Battery they might be on a geo quest!

A Murchison GeoRegion phone app will be coming out soon and if you'd like some Murchison GeoRegion brochures to show your own guests then please ask at the Shire office.

Emmaline James is the Shire's rep for the GeoRegion so if you have any questions or feedback about the Murchison GeoRegion please contact her artsandculture@yalgoo.wa.gov.au.



DISCLAIMER

The Yalgoo Bulldust is published by the Shire of Yalgoo as a public service for the community.

Contact: Shire of Yalgoo

Mail: 37 Gibbons St, Yalgoo 6635

Phone: 99628042

Fax: 99628020

Email: reception@yalgoo.wa.gov.au

The opinions expressed have been published in good faith on the request of the person requesting publication, and are not those of the Shire of Yalgoo. All articles, comments, advice and other material contained in this publication are by way of general comment or advice only and are not intended, nor do they purport to be the correct advice on any particular matter or subject referred to. No person should act on the basis of any matter, comment or advice contained in this publication without first considering, and if necessary taking appropriate professional advice upon the applicability to their particular circumstances. Accordingly, no responsibility is accepted or taken by the Shire of Yalgoo, or the authors and editors of the Yalgoo Bulldust, for any damage or loss suffered by any party acting in reliance on any matter, comment or advice contained here in.

ADVERTISING

**WOULD YOU LIKE TO PROMOTE WHAT YOU HAVE TO OFFER?
THE YALGOO BULLDUST CAN HELP.**

Advertising Commercial - Full Page (Black & White) \$35.00 Advertising Commercial - Half Page (Black & White) \$25.00

Advertising Commercial - Quarter Page (Black & White) \$18.00

Advertising Community - All of above (Black & White) FREE

Advertising Commercial - Full Page (Colour) \$60.00 Advertising Commercial - 1/2 Page \$45.00

Advertising Commercial - Quarter Page (Colour) \$30.00

Advertising Community - All of above (Colour) FREE

Please call the Shire if you have any enquiries on 08 99628042

DJUKI MALA

“ENERGETIC, HILARIOUS, GROUNDBREAKING”

BEAT MAGAZINE

BOND CREATIVES PRESENTS

DJUKI MALA



THE WEST AUSTRALIAN



BROADWAY BABY



XPRESS MAGAZINE



THE ADVERTISER



THE AUSTRALIA TIMES

MANDURAH PERFORMING ARTS CENTRE	SAT 3 OCT	FRI 23 OCT	YALGOO COMMUNITY HALL (FREE EVENT)*
HARVEY RECREATION & CULTURAL CENTRE	SUN 4 OCT	SUN 25 OCT	PEACE GORGE, MEEKATHARRA (FREE EVENT)
ARTS NARROGIN, NARROGIN TOWN HALL*	WED 7 OCT	THU 29 OCT	THE REGAL THEATRE, PERTH
BUNBURY REGIONAL ENTERTAINMENT CENTRE	FRI 9 OCT	FRI 30 OCT	THE REGAL THEATRE, PERTH
SANDRA DONOVAN SOUND SHELL, MANJIMUP	SAT 10 OCT	SAT 31 OCT	THE REGAL THEATRE, PERTH**
ALBANY ENTERTAINMENT CENTRE	SUN 11 OCT	THU 5 NOV	NINGALOO COMMUNITY CENTRE, EXMOUTH
RAVENSTHORPE TOWN HALL*	WED 14 OCT	SUN 8 NOV	NEWMAN RECREATION CENTRE, WHALEBACK ARENA*
ESPERANCE CIVIC CENTRE*	FRI 16 OCT	THU 12 NOV	RED EARTH ARTS PRECINCT, KARRATHA
GOLDFIELDS ART CENTRE, KALGOORLIE	SAT 17 OCT	SAT 14 NOV	ROEBOURNE HIGH SCHOOL OVAL (FREE EVENT)*
CUMMINS THEATRE, MERREDIN	TUE 20 OCT	FRI 20 NOV	BROOME CIVIC CENTRE*

* PLEASE CHECK WEBSITE FOR WORKSHOP DETAILS DAY PRIOR TO PERFORMANCE

** MATINEE & EVENING SHOWS

BOND CREATIVES

BOOKINGS VIA VENUE OR WWW.DJUKIMALA.COM



THIS PROJECT HAS BEEN ASSISTED BY THE AUSTRALIAN GOVERNMENT THROUGH THE AUSTRALIA COUNCIL FOR THE ARTS, ITS ARTS FUNDING AND ADVISORY BODY.

COVID-19

Coronavirus
(COVID-19)

KEEPING YOUR DISTANCE.

Help stop the spread of coronavirus by keeping your distance. Remember, don't shake hands or exchange physical greetings. Wherever possible stay 1.5 metres apart and practise good hand hygiene, especially after being in public places.

**TOGETHER WE CAN HELP STOP
THE SPREAD AND STAY HEALTHY.**

Advice regarding **Coronavirus (COVID-19)** will change regularly. Keep up to date. Visit **health.gov.au**



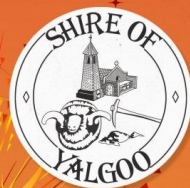

Australian Government

YALGOO EMU FESTIVAL

YALGOO EMU CHICK FESTIVAL

SATURDAY 3RD OCTOBER 2020

YALGOO SPORTING COMPLEX
& CORE STADIUM



OPENS 5:00PM

BOUNCY CASTLE FACE PAINTING
CIRCUS PERFORMANCE PONY RIDES
FREE COMMUNITY "CHEESEBURGERS"
DINNER FROM 6PM

LIVE MUSIC "FRESH & SALTY"

OPEN AIR SHINEMA MOVIE 7 - 9PM
"EMU RUNNER"

WEST COAST FIREWORKS 9PM

ENDS 9:15PM

A SMOKE AND ALCOHOL FREE EVENT

FOR MORE INFORMATION CONTACT DANNII & EMMALINE ON 0419 325 964

The Yalgoo Emu 'Chick' Festival is a smaller version of our annual Yalgoo Emu Festival due to COVID-19. This is a free event for the Shire of Yalgoo community & we look forward to welcoming visitors back to our regular festival program in 2021.



SHINEMA
CHAPMAN VALLEY MENSHEED

EMR GoldenGrove



IAN HOLLAND APPOINTED SHIRE OF YALGOO CEO

The Shire of Yalgoo at its Council meeting held on the 26 August 2020 appointed Ian Holland as its new Chief Executive Officer commencing 29 September 2020. The Shire has been assisted by LO-Go Appointments with the recruitment process, who are specialists in recruiting to Local Government.

Ian is a formally qualified Engineer and has been working in Local Government at the Shire of Kondinin for the past six years. His experience covers almost every aspect of Local Government administration including road maintenance and construction works. Ian is married to Hanusia and they have a two year old son.



Hanusia is a qualified school teacher and currently manages a large day care centre in Corrigin. Ian and his family look forward to settling into the community and meeting everyone in Yalgoo, Paynes Find and pastoralists.

The Council expressed its sincere thanks to John Read for his excellent work as Acting CEO in assisting the Shire of Yalgoo over the past eleven months, which has resulted in a very stable workforce over that period, as well as achieving significant financial benefits to the Shire, which will assist the Shire in many years to come. John leaves in mid October after a two week handover with Ian.

SHIRE A/CEO - JOHN READ

As mentioned in another article in this edition of the Bulldust, Ian Holland has been appointed the new CEO for the Shire of Yalgoo commencing on 29 September 2020. Ian has extensive experience in almost every facet of Local Government administration and is well qualified for the role. I have every confidence in Ian and I am sure he and his wife Hanusia and family will settle into the Yalgoo community really well.

After being in the Acting CEO role for almost 12 months, it is with sincere regret that I leave the Shire of Yalgoo in mid October after a two week handover with Ian. I have thoroughly enjoyed my time with the Shire of Yalgoo and will sincerely miss the Shire employees and other friends I have made. It was the goal of the elected Council that I be appointed for a 6-12 month period to allow for the newly elected Councillors in October 2019 (election) to settle into their role and take their time in carefully appointing a permanent CEO. Over the past 12 months we have achieved a very stable workforce with the only employee leaving being Ted Bukelis, Plant Operator, who has retired. We also have achieved a very strong financial position with a very healthy surplus (almost \$2 million) at the end of June 2020, as well as achieving significant rating income from the rating of mining infrastructure. It is a good and satisfying feeling when you leave a local government as its CEO on really good terms with everyone, knowing that you have left the organisation in better shape than when you started.

The Shire has adopted its 2020/21 budget which has an unprecedented capital works program (over \$3 million). These include renovating the Yalgoo Community Hall, construction of two self contained rammed earth chalets at the Yalgoo caravan park, a new residence for the WACHS Nurse, new plant (Grader, etc.), new Community Bus, renovating the Yalgoo Museum, entry statements for Paynes Find, \$1 million bitumen construction works on the Yalgoo Ningham Road (8.5kms) and Yalgoo Morawa seal widening 7kms, etc.

Ray Pratt, (Works Foreman) and his wife Helen, (Yalgoo Caravan Park Manager) are retiring in October 2020 and Craig Holland and his wife Britt will take over the roles. Britt, who is an Enrolled Nurse is currently studying towards being a Registered Nurse, which will hopefully be of benefit to the community in after hours medical emergencies. I would like to take this opportunity to sincerely thank Ray and Helen for their significant contribution to the Yalgoo Shire over many years and wish Craig and Britt all the best in their new roles.

With the state border closure as a result of COVID-19, we have seen a huge number of caravans and tourists in the Shire over the past few months, with our caravan park full.

This will be my last Bulldust Newsletter report and I take this opportunity to wish the Shire of Yalgoo and its residents the very best in the future.

Regards

JOHN READ
Acting Chief Executive Officer
Shire of Yalgoo - Where the Outback Starts!



Telephone: (08) 9962 8042
Mb: 0417484840



WORKS DEPOT—FOR SALE & PROSPECTING SUCCESS

SHIRE OF YALGOO - DISPOSAL OF VEHICLE

The Shire of Yalgoo invites written submissions for the purchase of its 2018 Toyota GXL 4WD Landcruiser crew cab vehicle. The vehicle has done approximately 120,000 kms and is in excellent condition. The vehicle may be inspected by making appointment with John Read, A/CEO on 0417 484 840. Submission in writing stating the price offered are to be submitted to the Shire Office by no later than 4.00pm Wednesday 7th October 2020.



DISPOSAL OF AIR COMPRESSOR

The shire of Yalgoo has a trailer mounted surplus to requirements. It is an airman compressor with an isuzu motor on a licenced Trailer all in working condition please contact shire foreman if you wish to inspect this item. & if Interested submit a price in writing.

PROSPECTING

The shire prospecting area has been very successful from a tourist point of view. Prospectors can purchase a permit for \$10 from the shire and this gives them the opportunity for 2 people to prospect for one week. We have issued over 200 permits so this in effect has been a tremendous boost to tourism for the town of Yalgoo. Some prospectors have gone away empty handed but many have been



lucky enough to leave with a piece of Yalgoo gold. Gary a new prospector just starting out came here with a small cheap detector and was lucky enough to score a beautiful nugget weighing 2 ounces. We have many photos of happy customers. The prospecting area is 600 hectares in size so there is plenty of room for prospectors.

Shire Works Foreman

Shire of Yalgoo - Where the Outback Starts!



Telephone: (08) 9962 8042

Mb: 0437 838 134

COMMUNITY CONSULTATION

PLEASE RETURN CARDS BY TUESDAY 6 OCTOBER TO SHIRE OFFICE



Have your say in planning for the future in the Shire of Yalgoo

What are the top two priorities you would you like see to happen in your local community in the next 4 years?

1st Priority

2nd priority

If you imagine your perfect community in 10 years-time, what would you most like to see or feel?

1st Priority

2nd priority

What are the 2 most important issues you think the community will face in the future?

1st Priority

2nd priority

Please tick the boxes below that apply to you:

Do you live in Yalgoo Payne's Find Pastoral Area Other Settlement

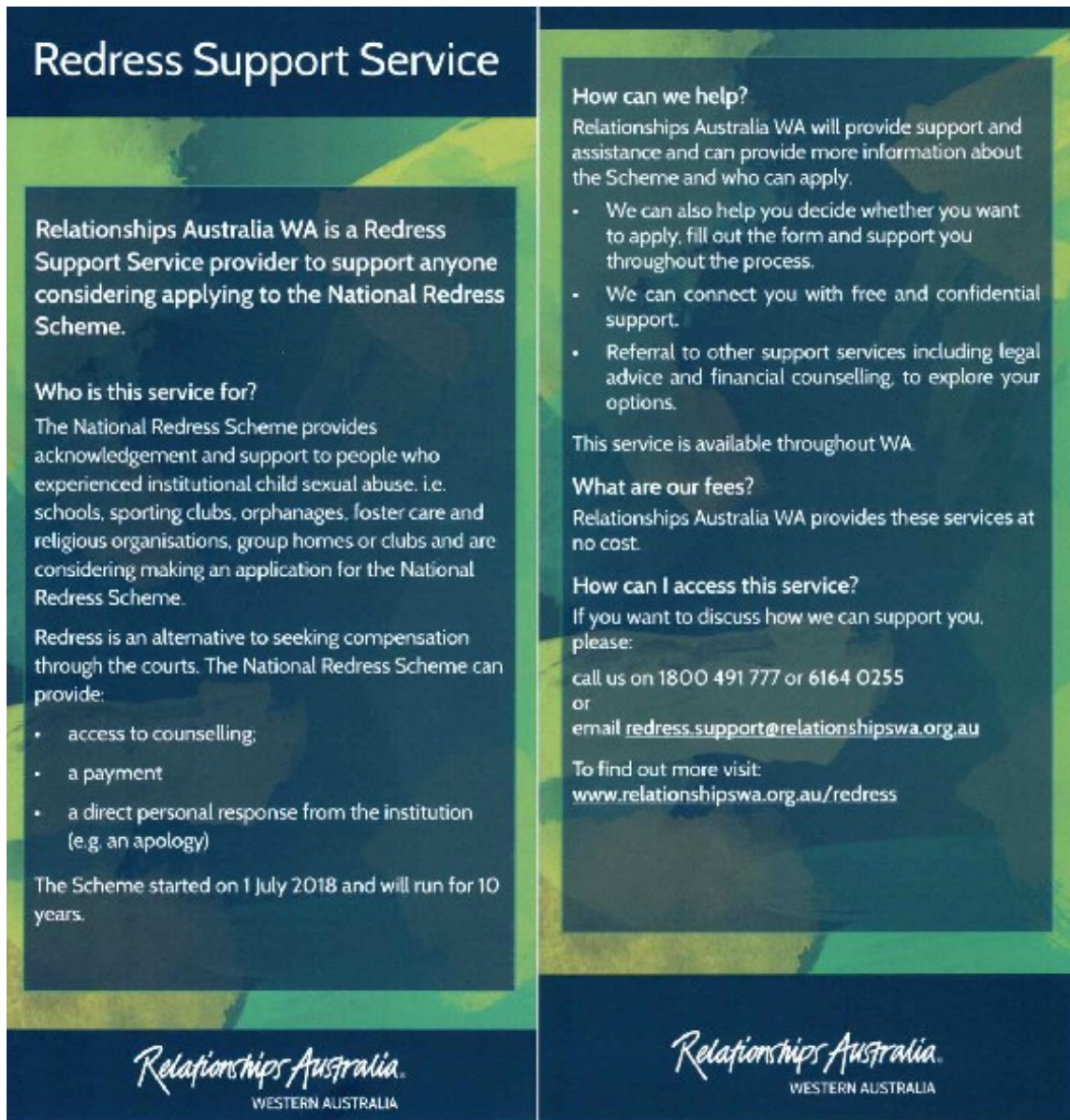
Are you: Male Female Identify as 'Other'

Permanent Resident Temporary Resident Visitor Business Owner

Age Range: Under 15 15-24 24-40 41-65 Over 65 Rather not say

NATIONAL REDRESS SCHEME

QUERIES? CONTACT LOU TATASCIORE @ RELATIONSHIPS AUSTRALIA



Redress Support Service

Relationships Australia WA is a Redress Support Service provider to support anyone considering applying to the National Redress Scheme.

Who is this service for?

The National Redress Scheme provides acknowledgement and support to people who experienced institutional child sexual abuse, i.e. schools, sporting clubs, orphanages, foster care and religious organisations, group homes or clubs and are considering making an application for the National Redress Scheme.

Redress is an alternative to seeking compensation through the courts. The National Redress Scheme can provide:

- access to counselling;
- a payment
- a direct personal response from the institution (e.g. an apology)

The Scheme started on 1 July 2018 and will run for 10 years.

How can we help?

Relationships Australia WA will provide support and assistance and can provide more information about the Scheme and who can apply.

- We can also help you decide whether you want to apply, fill out the form and support you throughout the process.
- We can connect you with free and confidential support.
- Referral to other support services including legal advice and financial counselling, to explore your options.

This service is available throughout WA

What are our fees?

Relationships Australia WA provides these services at no cost.

How can I access this service?

If you want to discuss how we can support you, please:

call us on 1800 491 777 or 6164 0255
or
email redress.support@relationshipsaustralia.org.au

To find out more visit:
www.relationshipsaustralia.org.au/redress

Relationships Australia.
WESTERN AUSTRALIA

Lou Tatasciore
Service Promotion and Engagement Officer

Relationships Australia.
WESTERN AUSTRALIA

1300 364 277
www.relationshipsaustralia.org.au

SCHOOL HOLIDAY PROGRAM



Date	event	LOCATION	Time	age
SAT 26 SEPT	ART CLUB — TOM DE MUNK COMMUNITY SCULPTURE	ARTS CENTRE	9AM—12PM	5 – 17 yrs
WED 30 SEPT	YALGOO FOOTY CARNIVAL STEPHEN MICHAEL FOUNDATION	SPORTS COMPLEX & CORE STADIUM	10AM—2PM	10 – 16YRS
THURS 1 OCT	CIRCUS SCHOOL	SPORTS COMPLEX & CORE STADIUM	10Am—3PM	5 – 17 yrs
FRI 2 OCT	CIRCUS SCHOOL	SPORTS COMPLEX & CORE STADIUM	10Am—3PM	5 – 17yrs
SAT 3 OCT	ART CLUB—COMMUNITY SCULPTURE	ARTS CENTRE	9AM—12PM	5 – 17 yrs
SAT 3 OCT	YALGOO EMU “CHICK” FESTIVAL SHINEMA, MUSIC, FIREWORKS, PONY RIDES, CIRCUS PERFORMANCE	SPORTS COMPLEX & CORE STADIUM	5–9PM	FAMILY EVENT
TUES 6 OCT	INFINITY SKATE	RAGE CAGE SKATE PARK	10Am—2PM	5—17 YRS
WED 7 OCT	INFINITY SKATE	RAGE CAGE SKATE PARK	10Am—2PM	5—17 YRS
WED 7 OCT	GRAMS TIS—BINGO	SPORTS COMPLEX & CORE STADIUM	6:30 – 9PM	ADULTS
THURS 8 OCT	GRAMS TIS — KIDS IN KITCHEN	SPORTS COMPLEX & CORE STADIUM	10AM—2PM	5 – 17YRS
THURS 8 OCT	GRAMS TIS — MOVIE NIGHT	SPORTS COMPLEX & CORE STADIUM	7PM – 9PM	5 – 17YRS
FRI 9 OCT	GRAMS TIS — FUN GAMES	SPORTS COMPLEX & CORE STADIUM	10AM—2PM	5 – 17YRS



FOR MORE INFO CONTACT THE SHIRE OF YALGOO

37 Gibbons St, Yalgoo, Western Australia, 6635.

Phone: 9962 8042 | Email: community@yalgoo.wa.gov.au

PARENT VOLUNTEERS WELCOME



COMMUNITY DEVELOPMENT

EMU "CHICK" FESTIVAL & COVID-19

Get ready for an evening of Outdoor Shinema, live music, circus, fun & fireworks on Saturday 3rd of October. The Yalgoo Emu 'chick' Festival is a smaller version of our annual 'Yalgoo Emu Festival' due to covid-19. This is a free event for the Shire of Yalgoo community & we look forward to welcoming visitors back to our regular festival program in 2021". Our since thanks to Chapman Valley men shed and WA Primary health alliance for bringing the Shinema to Yalgoo Emu "Chick" Festival in 2020.

GEOREGION LAUNCH

The official launch in Mount Magnet on Friday 18th September went very well and the Shire of Yalgoo will present a screening of the official launch for tourism operators and community members who could not attend. Comprising seven SHIRES of CUE, MEEKATHARRA, WILUNA, MOUNT MAGNET, MURCHISON, SANDSTONE, YALGOO - the Murchison GeoRegion harnesses this subregion's incredible geology, natural landscapes, biodiversity (flora and fauna) as well as culture (Aboriginal and Non Aboriginal) to offer unique experiences to a growing state, national and international Geotourism market - which is designed to generate social and economic prosperity. More screening details soon.

TOUCH RUGBY & RUGBY ROOS

The Shire has engaged Tom Gorman to teach and run Adults Touch Rugby on Friday evenings starting in Term 4. Touch will be held from 7pm Friday evenings to escape the heat with teams made of approx seven a side. Tom will also hold Rugby Roos training on Saturday mornings from 9am for children of all ages.

Young people aged 13—17 years are welcome to register their interest in Adults touch rugby sessions with Emmaline and Dannii.

HACC & AGED HOUSING

The Shire is seeking interest from elders who would like assistance through the HACC Home and Community Care program through Mullewa Hospital. Please contact Emmaline on (08) 9962 8042 or email community@yalgoo.wa.gov.au about completing form.

COMING SOON



COMMUNITY CONSULTATION

As part of our community consultation process in strategic planning, we are seeking your help to plan our facilities, services and projects to support the growth and development of our Shire. Experienced consultants, Margaret Hemsley and Catherine Ehrhardt from LG People and Culture will be facilitating the next phase of the SCP engagement process. You are invited and encouraged to attend the Community Consultation workshop at Core Stadium with the consultants on Tuesday 6th September 5:30—7:30pm in Yalgoo. Paynes Find workshop will be held in Paynes Find on Thursday 8 September 11— 1pm at First Aid Post.

DJUKI MALA

Direct from North East Arnhem Land, Indigenous dance sensations and landmark dance/theatre company that took the world by storm present their internationally acclaimed smash hit production. Unique, infectious, high energy... like a confetti cannon point blank to the heart. Djuki Mala wow audiences with a spectacular fusion of traditional dance, pop-culture and storytelling that is a marvel of timing, comedy and clowning with a hefty dose of heart and soul!

Winners - Best Dance Adelaide and Perth Fringe World 2017
Winners - West Australian Arts Editors Award 2017

Currently the community hall venue will be at capacity with Yalgoo residents under covid-19 gathering restrictions. We are working with the Producers to develop an outdoor performance so we can cater to others from outside Yalgoo who would like to come. Keep an eye on our social media pages in October. A Dance workshops will be offered to Yalgoo residents (Adults & Kids) the evening prior in the Hall.



DANCE WORKSHOP THURSDAY 22ND OCTOBER
PERFORMANCE FRIDAY 23RD OCTOBER

NAIDOC WEEK VOLUNTEERS

The Shire of Yalgoo Community development team is seeking volunteers who would like to assist with the planning of NAIDOC 5-12 November activities. In particular a Community Day / Cookup. If you would like to take part please contact Dannii Lawson on 08 9962 8042 or email cd@yalgoo.wa.gov.au.

Emmaline James
Manager Community Wellbeing, Arts & Culture
Shire of Yalgoo - Where the Outback Starts!
P: 0419 325 964
E: community@yalgoo.wa.gov.au

Dannii Lawson
Community Development Trainee
Shire of Yalgoo - Where the Outback Starts!
P 9962 8042
E cd@yalgoo.wa.gov.au



Integrated Chronic Disease Care Program

**Do you have a team that can
assist with your **diabetes,**
cardiovascular disease or
respiratory disease?**



Podiatry | Dietetics | Physiotherapy | Diabetes Education

**Our Team can assist with these services and provide
care co-ordination to assist with all your health
appointments or enquiries.**

**If you suffer from Diabetes, Cardiovascular Disease or Respiratory
Disease and would like to make changes to improve your health,
call our Care Coordinators Beryl or Danielle on **0447 268 603****



WAPOL YALGOO POLICE

IF YOU REQUIRE POLICE ATTENDANCE, BEST PRACTICE IS TO
CALL 000 OR 131 444



Yalgoo Police have been busy with community engagement.

On Tuesday 4th of August Yalgoo Police participated in a Rugby Union workshop in Mullewa with children from Yalgoo and Pia communities attending with Mullewa. The day was organised by Tom Gorman a passionate Rugby union WA supporter. Sporting equipment to the value of \$3000 was donated to the day by EMR Golden Grove.

Yalgoo Police conducted a road rules workshop with kids at the Yalgoo Primary School, Police encourage the kids to wear helmets as all the community should to protect the head should a fall occur.

Yalgoo Police also presented the Yalgoo Primary School with cricket equipment kindly supplied by the Western Warriors. Police participated in a cricket game at the school and everyone had a lot of fun.

Road Policing is a priority for the Yalgoo Police and we spend a lot of time on the highway. The next school holidays are not far away and for those travelling please keep to the speed limit, make sure you wear seatbelts and have a safe journey.

I have noticed in the year I have been here that some residents of Yalgoo are not very considerate with the playing of loud music late into the night and early hours of the morning. The Environmental Protection Act 1986 Section 81 gives Police the power to issue Noise Abatement Notices to a home owner to desist with loud music for a period up to 7 days. Failure to comply with a Noise Abatement Direction can result in a prosecution and a maximum fine of \$5000.00. The Act also provides Police the powers to enter a premise and seize equipment they believe is causing the noise. I ask all residents, that you be considerate to your neighbours when having a party or gathering.

Yalgoo Police have also had a theft and trespass report last week. Please remember to lock your valuables away. There are some in the community that do not respect other people's property.

Sergeant Michael Gill
Officer in Charge Yalgoo Police Station | Western Australia Police Force
Cnr Piesse St & Campbell St, Yalgoo WA 6530
T: (08) 9962 8500 | F: (08) 9962 8550



YOUTH FOCUS



YOUTH FOCUS
IS HERE TO
HELP

Have you been feeling stressed,
anxious, depressed or lonely?

Do you want to talk to someone about relationships,
school, peer pressure or bullying?

We provide a **free, friendly and confidential counselling service** to 12 to 25 year olds to help you build skills and resilience to address a range of stressful situations and emotions from the everyday, to those that relate to depression, anxiety, self-harm or thoughts about suicide.

Contact us today



youthfocus

[@youthfocuswa](https://www.youthfocus.com.au) | hello@youthfocus.com.au | 08 6266 4333

If you or someone you know are in emotional crisis, please call Lifeline on 13 11 14

YOUTHFOCUS.COM.AU

Youth Focus is committed to embracing diversity and eliminating all forms of discrimination in the provision of mental health services. We pay respects to Elders past and present and are committed to making a positive contribution to the wellbeing of Aboriginal and Torres Strait Islander young people by providing services that are welcoming, safe, culturally appropriate and inclusive.



COUNCIL MEETING DATES



Ordinary Council Meeting Dates for 2020

The Shire of Yalgoo schedule of meeting dates and locations for 2020 are as follows:

Month	Date	Day	Time	Council	Location
January	31	Thursday	10.00 am	Ordinary	Yalgoo
February	28	Friday	10.00 am	Ordinary	Yalgoo
March	27	Friday	10.00 am	Ordinary	Yalgoo
April	24	Friday	10.00 am	Ordinary	Yalgoo
May	29	Friday	10.00 am	Ordinary	Paynes Find
June	26	Friday	10.00 am	Ordinary	Yalgoo
July	31	Friday	10.00 am	Ordinary	Yalgoo
August	28	Friday	10.00 am	Ordinary	Yalgoo
September	25	Friday	10.00 am	Ordinary	Paynes Find
October	30	Friday	10.00 am	Ordinary	Yalgoo
November	27	Friday	10.00 am	Ordinary	Yalgoo
December	18	Friday	10.00 am	Ordinary	Yalgoo

Ordinary Council Meetings commence at 10.00 am and are held in the Council Chambers, Gibbons Street, Yalgoo, or in the Community Centre, Paynes Find.

The Ordinary Council Meetings are open to the public.

John Read
Acting Chief Executive Officer

CANINE CONTROL



UNRESTRAINED DOGS

The shire as received complaints about the amount of dogs running around town not restrained at the moment. Residents are reminded of the following two sections of the Dog Act 1976.

The Murdoch Vet Sterilisation program has been put on hold until further notice due to COVID. I will advise when I receive an update.

Please also Note: Dog and cat registrations are due on 31 October of each year. Animals MUST be microchipped prior to being registered.

Dog Act 1976

Section 7. Dogs to be registered

- (1) Subject to subsections (1a) and (3), if a dog is not registered under this Act or the law of another State or a Territory each of the following persons commits an offence —
 - (a) the owner of the dog;
 - (b) if the dog is ordinarily kept or permitted to live in or at premises in Western Australia, the occupier of the premises.

Penalty:

- (a) for an offence relating to a dangerous dog, a fine of \$10 000;
- (b) for an offence relating to a dog other than a dangerous dog, a fine of \$5 000.

section 31. Control of dogs in certain public places

- (1) A dog shall not be in a public place unless it is —
 - (a) held by a person who is capable of controlling the dog; or
 - (b) securely tethered for a temporary purpose,by means of a chain, cord, leash or harness of sufficient strength and not exceeding the prescribed length.

Peter Smith. [Canine Control. 0427 261 397](tel:0427261397)

BUSH FIRE ACT

BUSH FIRE ACT – RESTRICTED BURNING TIMES

Restricted burning times for the Shire of Yalgoo apply from 1st October up to and including 14th November 2020. After 14 November 2020 Prohibited Burning applies.

This means that if you wish to burn during the Restricting Burning period, Permits are required to be obtained from a Shire of Yalgoo Fire Control Officer.

Ian Holland
CEO and Chief Bush Fire Control Officer



SCHOOL HOLIDAY PROGRAM

WAPOL BIKE RESCUE & FAIR GAME AUSTRALIA



... CONTINUED

GRAMS—TACKLING INDIGENOUS SMOKING



ST JOHN AMBULANCE

FIRST AID TRAINING—Yalgoo 29th October 2020

St John



4 out of 5 people
can't save a life.



Are you one of them?

Book a first aid course today


Upcoming First Aid courses
HLTAID003 Provide First Aid 1 Day
October 2020

Meekatharra Tuesday 27th Oct
Mt Magnet Wednesday 28th Oct
Yalgoo Thursday 29th Oct

To book your course call 9938 0900 email Geraldton@stjohnwa.com.au
St John Ambulance – Geraldton Sub Centre

YALGOO FOOTY CARNIVAL

WEDNESDAY 30TH SEPTEMBER 2020



YALGOO YOUTH FOOTY

CARNIVAL

WEDNESDAY 30 SEPTEMBER 11AM - 3PM
CORE STADIUM, YALGOO

PRIZES AND GIVEAWAYS

Fun Zone for children aged 5-9

FREE Food for all participants

Who: Boys and girls aged 10 to 16 What: AFL Carnival

The Yalgoo Youth Footy Carnival will provide an opportunity for youth living in the Murchison region to put their talent on display in a one-day footy carnival. Across the day, participants will play in a series of AFL games and have the chance to win prizes and awards for their efforts.

For more information please contact Lou Wakefield on 0402 271 145 or lou@smfoundation.org.au



EON FOUNDATION

G'day Yalgoo and beyond,

It's a pleasure to be writing to you all again, I trust you are well, warm and happy.

The days are flying by faster than I ever knew possible, the shortest day behind us, flowers beginning to bloom, it's starting to feel a lot like spring!

Our EON school garden has been exploding with different veggies for the past few months. Heads of cauliflower, cabbages, broccoli florets, millions of snow peas, kale, coriander, dill and celery. Our corn is tall but yet to produce any cobs worth writing about, watch this space.

We have planted a bunch of trees - mulberries, lemon, lime, orange, mandarin and mango. Massive thanks as always to the golden gems at Yalgoo Shire; Trev, Chris and thank you Ray for gifting us their precious time. We couldn't have made it this far without you all.



As much as the evenings and mornings are chilly, spring is surely around the corner and it's time to get your garden ready to get the most we can from this season.

Soil – Soil is where all the magic happens, and we are so lucky out here in the Mid West to have such mineral rich soil to begin with. Adding organics to create structure and drainage, and to add nutrients also goes along way. Manure is magic – goat, sheep, cow, horse (if it has been well composted so the weeds do not germinate) and chicken in small safe doses.

I think of building soil like baking a cake: a few wheelbarrows of wandari, half a wheelbarrow of river sand, a wheelbarrow of manure and 10 cups of organic dynamic lifter; mix and leave to sit for a week or so. Keep well-watered, add your seeds, add the final finishing touches of mulch, and then ta-da, in a month or so's time beautiful veggies to enjoy all around. It really can be that simple.

Retic / Water – We all know how important water is to nature, to humankind and to our gardens. It can be as straight forward or complex as you want to make it. If you have the space, time and patience the old hand watering with the hose technique will work just fine. If you are short for time, then perhaps using a small tap timer would be better. Retic is a lot like lego really, very straight forward once you get your head around. Water runs from the tap, down to the pipe, which then elbows into your garden. And this can happen twice a day, or once a day, or twice a week - it will work however you set it.

If retic is another language for you feel free to contact me and I will be happy to look at options at your home!

The space – Picking a spot for your garden doesn't have to be complicated either. An old bath tub with the plug left out, a clean food grade IBC, an old rainwater tank cut in half or the tried and tested "no dig garden bed". You should aim to have 6 hours of direct sunlight on your veggie patch to get the most from it.

The crops – Heading into spring I'm getting my summer crops ready to go! Things like; tomatoes, cucumber, zucchini, chillies, capsicums, sweet potato, pumpkins, basil, eggplant, beans and peas. A lot of these I am growing from seed that has been saved from last year. The sweet potatoes are from cuttings that have been propagated, and the potatoes are ones from the shop that started to sprout in the pantry. Potatoes are awesome for this! If they grow "eyes", those funny little lumps that you see on them sometimes, that means they are okay to be planted in the garden! Have a go and see how much fun pulling up potatoes in a few months can be. They say 1 potato can grow to yield 1 kg!

Well Mid West mob I hope these little tips have inspired you to get out in the garden. If you happen to spot me around town be sure to stop and have a chat.

Also, if you tune into ABC Radio Midwest and Wheatbelt on a Saturday morning @ 6am you will be able to catch me chatting all things gardening with Nat Browning.

Take care and happy gardening everyone.

SALLY DIGHTON
EON PROJECT MANAGER – MIDWEST/ MURCHISON REGION
m: 0429 443 028
e: sally.dighton@eon.org.au w: www.eon.org.au



ALCOHOL & DRUG SUPPORT



Alcohol & Drug Support Line

Supporting Aboriginal Families

Give us a call

Metro callers: 9442 5000

Country callers: 1800 198 024



ALCOHOL & DRUG SUPPORT

ALCOHOL & DRUG SUPPORT LINE

For **anyone** concerned
about their own or
another person's
alcohol or drug use.

Confidential. Anonymous. Professional.

Call us 24 hours a day
on **9442 5000** or
1800 198 024 (country callers)

alcoholdrugsupport@mhc.wa.gov.au
alcoholdrugsupport.mhc.wa.gov.au



Government of Western Australia
Mental Health Commission

YALGOO BULLDUST

HEALTHY RECIPE

KIDNEYHEALTH.ORG.AU

SOUPS

Fish Soup

Foods 4



13 Serves

Ingredients

2 fresh fish fillets cut into chunks

1/2 chopped fresh chilli (optional)

1 crushed garlic clove

1 teaspoon crushed ginger

1 chopped onion

1 peeled and chopped carrot

2 sticks sliced celery

1 cup diced sweet potato

1 cup shredded cabbage

1 chopped zucchini

1 x 400g tin chopped tomato
(reduced salt)

2 cups water, extra water if needed

What to do

- In a large saucepan add fish, chilli, garlic, ginger, onion, carrot, celery, sweet potato, cabbage, zucchini and the can of tomatoes.
- Add enough water to cover the fish.
- Cover and cook on low heat until the vegetables are soft.
- Spoon into bowls and serve hot.

Step 1



Step 2



Step 3

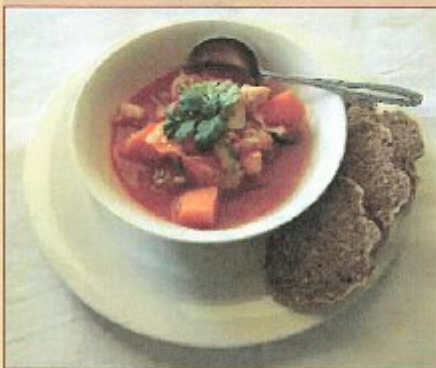


Step 4



TUCKER TIP

Fish soup can be strained so only the liquid is left for serving. For variety, add bok choy just before serving – cook for 1 minute until soft.



ST JOHN AMBULANCE



Drive life in Yalgoo.

Every beat of this ordinary life is an extraordinary thing.
And we need your help to protect it.

St John Yalgoo urgently needs volunteer ambulance drivers to respond to call-outs, attend emergencies and perform routine patient transfers.

If you'd like to help, visit stjohnchangelives.com.au.

Or, give our Community Paramedic Michelle Fyfe a call on 0437 681 562 or email cp.midwesteast@stjohnwa.com.au.

Life goes on.
Volunteer with St John.



YALGOO NURSING POST

SEPTEMBER, OCTOBER, NOVEMBER CALENDAR

GRAMS Clinics

7/09/20

5/10/20

9/11/20

7/12/20

ICDC – 21/09/20

Visiting Optometrist mobile eye care –
29/09/20

RFDS Clinics

10/09/20

24/09/20

8/10/20

22/10/20

5/11/20

19/11/20

3/12/20

17/12/20

Looking after your mental health and wellbeing

Looking after your mental health and wellbeing is just as important as looking after your physical health, even when you are in self isolation.

It's normal and understandable to feel concerned about the Coronavirus; maintaining a regular routine each day helps.

Looking after your mental health enables you to function well and be able to cope when things aren't going so well. Some little things you can do include:



STAY CONNECTED WITH FAMILY AND FRIENDS THROUGH SOCIAL MEDIA AND BY PHONE



GET ENOUGH SLEEP



KEEP ACTIVE & GET OUT IN THE FRESH AIR BY EXERCISING IN YOUR GARDEN OR ON YOUR BALCONY



TALK ABOUT HOW YOU ARE FEELING WITH YOUR FRIENDS AND FAMILY REGULARLY



REDUCE ALCOHOL INTAKE



GET YOUR HOBBIES OUT TO KEEP BUSY


think
MENTAL HEALTH

DESERT BLUE CONNECT

Important news regarding Desert Blue Connects Rural Support Services



You are not alone!

COVID-19 is causing disruptions to normal life across the planet and, unfortunately, we are not immune in the Midwest.

We understand that our clients may wish to stay home and distance themselves from others. During this period of uncertainty, we are able to provide counselling sessions via phone or video conferencing.

Contact:

Serina – 0419 348 006

Or email

Serinaa@desertblueconnect.org.au

Narelle – 0427 731 238

Counselling available

Our adult counselling can be provided for issues such as stress, anxiety and depression, grief and loss, self-esteem, family relationships or personal, emotional and relationship issues.

Rural support is available for people in the shires of Mingenew, Morawa, Three Springs, Carnamah, Coorow, Perenjori and Yalgoo.

www.desertblueconnect.org.au



Desert Blue Connect





YALGOO PRIMARY SCHOOL

WAPOL YALGOO POLICE X YPS ROADWISE

Following the WAPOL Bike Rescue program in the July School Holidays WAPOL Yalgoo police conducted a Roadwise session with the children at Yalgoo Primary School in term 3.

YALGOO ARTS CENTRE

HELEN ANSELL PAINTING WORKSHOP

Helen Ansell's painting workshop were a hit with 15 Artists joining the painting workshops over two weeks. Helen returns to Yalgoo in November 2020 for NAIDOC WEEK to assist the community to create a collaborative mural at the Yalgoo Arts & Cultural Centre building.

MARIANNE PENBERTHY TEXTILES

Marianne Penberthy is an International Artist residing in Geraldton, Western Australia. Marianne shared her extensive knowledge of mark making on textiles through bundle dying and tannin processes. We look forward to seeing Marianne in Yalgoo again.

NATALIE JACKSON & DENISE READ FELTING

Plenty of sore arms but huge smiles could be seen after the Felting workshop in August held at Core Stadium. Ipad covers, wall hangings and Book covers didn't make it to the Arts Centre gallery (Artists loved them so much they kept them) but keep an eye out for future creations.

HELEN COLEMAN TANNIN DYE

Chemistry and experimentation abound with the Natural Dye and Tannin workshop with West Australian Artist Helen Coleman in September at the Yalgoo Arts Centre. Working with local flowers and barks Helen taught Artists how to create their own colourful inks to use on paper, silk and cotton. The textiles experimentation continues! Watch this space!

UPCOMING

TOM DE MUNK-KERKMEER—ARTIST IN RESIDENCE—SEP/OCT



Tom de Munk-Kerkmeer is an International multi disciplinary artist whose main focus is Sculpture, but who uses painting, installation, performance, gardening/land-art and sustainable design as integral parts of his arts practice.

Tom will be working as the Artist in Residence at the Yalgoo Arts & Cultural Centre from Friday 25th September - Monday 5th October. Tom will offer an open studio style workshop where people can drop in and participate in the creation of a contemporary outdoor sculpture for the Yalgoo Arts & Cultural centre.



*Pictured: Marianne Penberthy teaching the workshop (top left)
Maureen Page (top right) and Rhiannon Hodder (bottom left) assists Marianne rolling scalves.*

Emmaline James
Manager Community Wellbeing, Arts & Culture
Shire of Yalgoo - Where the Outback Starts!
P: 0419 325 964
E: artsandculture@yalgoo.wa.gov.au

Rhiannon Hodder
Arts Centre Manager Trainee
Shire of Yalgoo - Where the Outback Starts!
Telephone: (08) 9962 8042
Email: artscentre@yalgoo.wa.gov.au



***Do you have suggestions about how MEEDAC
can support your community?***

MEEDAC Community Development Program
aims to help generate positive community out-
comes.

We are seeking your input regarding
activities and projects that MEEDAC could poten-
tially be involved with in your community.
We welcome your suggestions, comments and
feedback, which can be sent via email, post or
phone;

Email: activities@meedac.com

Post: PO Box 2996, Geraldton, WA 6530

Phone: 0476 809 055

DFES - BUSH FIRE SERVICE



PASTORAL FIRE SAFETY AWARENESS

Are your buildings including out buildings and other infrastructure safely protected from bushfire?



Pastoral areas that have had significant rainfall can have well above average grass growth. The possibility of large uncontrolled bushfires in these areas are a real threat. Your awareness and preparations can make the difference

Make A Bushfire Plan

Having a plan in place that all family members, workers and visitors are aware of will save you time in an emergency.

Who is at home? Who can help? Which way will you leave if you need to? Who do we contact? And How?

www.dfes.wa.gov.au/firechat

Undertaking these steps will help

- Clean away vegetation and rubbish from around buildings.
- Clean out gutters and prune trees around buildings
- Clean grass and rubbish away from fuel storage facilities.
- Widen mill run tracks to help stop fire spread. This will also help with fire suppression strategies.
- Putting in fire breaks around remote outbuildings and unused water supplies.
- Keep vegetation around buildings grazed if possible.
- Check fire fighting equipment and keep it readily available.
- Put in a fire break around the house paddock.
- Thought should be given to livestock welfare and movement
- Have good maps on hand





DFES
Department of Fire &
Emergency Services

Government of Western Australia
Department of Fire & Emergency Services
State Operations

TOURISM

- If Tourism activities are undertaken on your station make sure fire breaks are in place around buildings and campsites etc.
- Make sure emergency evacuation procedures are in place for tourists on your station.
- Advise tourists on dangers of bushfire.
- Camp fires can only be lit with authorisation from the station owner (**Subject to restricted/prohibited burning times*).
- Keep a record of who is where on the station.
- Be aware you are in a bushfire area and look out for smoke.

FIRE MONITORING

- Fires can be monitored on Websites such as:
 - Landgate Fire Watch
 - North Australian Fire Information (NAFI) or
 - Sentinel
 - Emergency.wa.gov.au (Incident Warnings)
- By accessing these sites it is possible to see where the fire is burning and also measure the burnt area. Images update periodically with accuracy +/-2km
- If a bushfire occurs on your station be sure to call 000

For a Fire Emergency Call:

000

For further fire safety information contact: The Midwest Gascoyne Regional Office or visit emergency.wa.gov.au



DFES
Department of Fire &
Emergency Services

Telephone: (08) 9956 6000

Facsimile: (08) 9964 4617

Website: www.dfes.wa.gov.au

Email: DFES@dfes.wa.gov.au

The information contained in this publication is provided by the Fire and Emergency Services Authority (DFES) voluntarily as a public service. This brochure has been prepared in good faith and is derived from sources believed to be reliable and accurate at the time of publication. Nevertheless, the reliability and accuracy of the information cannot be guaranteed and DFES expressly disclaims liability for any act or omission done or not done in reliance on the information and for any consequences, whether direct or indirect, arising from such act or omission. This publication is intended to be a guide only and readers should obtain their own independent advice and make their own necessary inquiries.

Want to volunteer as a Bushfire Brigade member?



Please contact the Shire of Yalgoo for further details. Free training and Personal Protective Equipment provided to all Bushfire Volunteers

BOREDOM BUSTERS

Spring

G	F	S	Q	O	I	I	S	L	S	U	R
E	D	U	R	Y	G	N	D	M	B	K	V
B	T	A	P	T	I	Q	E	K	D	I	F
S	K	N	F	A	G	H	E	H	P	B	C
P	T	D	R	F	B	W	S	Q	P	R	J
I	S	R	E	W	O	L	F	D	T	L	S
L	F	H	Z	F	G	D	S	A	N	U	M
U	X	U	U	F	R	R	I	D	J	T	Z
T	H	C	U	Z	A	J	A	L	U	T	V
U	M	B	R	E	L	L	A	S	S	B	M
B	N	S	M	G	N	I	R	P	S	M	K
R	A	I	N	B	O	W	D	J	A	C	P

Left List:
BUDS
DAFFODILS
FLOWERS
GRASS
RAIN

Right List:
RAINBOW
SEEDS
SPRING
TULIPS
UMBRELLA

© Copyright FreeKidsCrafts.com

SUDOKU

1. Each row, column, and nonet can contain each number (typically 1 to 9) exactly once.
2. The sum of all numbers in any nonet, row, or column must be equal to 45.

4								
					9			
						7	8	5
		7		4	8		5	
		1	3					
		6		7				
8	6					9		3
7					5		6	2
		3	7					

LiveSudoku.com - Hard Puzzle #1122450

7	4			3			1	
	1	9		6	8	5		2
					4	3		
	5	6	3	7				1
		1	8				9	5
	9			2		6		
1		3	4		7	2		
5			2					8
	8				1	4	7	



Coronavirus
(COVID-19)

GOOD HYGIENE IS IN YOUR HANDS.

Wash your hands thoroughly with soap and water for at least 20 seconds to prevent passing on germs. Dry your hands.

**TOGETHER WE CAN HELP STOP
THE SPREAD AND STAY HEALTHY.**

For more information about **Coronavirus
(COVID-19)** visit **health.gov.au**



YALGOO GENERAL STORE

OPENING HOURS

Weekdays 8:30am—5:30pm

(closed 1pm– 2:30 daily)

Saturday 8:30—1:00 pm

Sunday 10:00 —12:00pm

Public Holidays Closed

Please be advised only 3 people are allowed to be in the shop at any one

Phone (08) 9962 8033 | Community Post Office | Gibbons Street Yalgoo

YALGOO HOTEL

OPENING HOURS

Take-Away alcohol is available from 4:30pm daily (except Sunday &
Take Away food is still available from 6:00 pm daily (except Sunday)

Stan Willock

T: (08) 9962 8031

F: (08) 9962 8046

E: stan.willock@hotmail.com

CARAVAN PARK PRICE LIST

FAMILY ENSUITE UNIT

\$210:00 p/night

- Sleeps 5
- 1 Queen bed in first room
- 1 king single bed & 1 set of single bunk beds in second room
- Flat screen TV
- Fridge
- Reverse cycle air-conditioning
- Tea & coffee making facilities

QUEEN ENSUITE UNIT

\$130:00 p/night

- Sleeps 2
- 1 Queen bed
- Shower & toilet
- Flat screen TV
- Fridge
- Reverse cycle air-conditioning
- Tea & coffee making facilities

The Yalgoo
Caravan Park is
Open for Business

TWIN UNIT

\$80:00 p/night

- Sleeps 2
- 2 King single beds
- Flat screen TV
- Fridge
- Reverse cycle air-conditioning
- Tea & coffee making facilities

DAY

Powered Site \$26

Powered Site (Pension) \$22

Powered Site (Extra Person) \$5.50

Unpowered Site \$18

NON RESIDENTS

Showers \$5

Washing Machine \$3



Call 9962 8472
to make a
Booking

WEEK

Powered Site \$135

Powered Site (Pension) \$110

Powered Site (Extra Person) \$26

Unpowered Site \$95

UnPowered Site (Extra Person) \$16.50

YALGOO CARAVAN PARK

The Yalgoo Caravan Park is situated in the main street of Yalgoo (Gibbons Street) which is a comfortable six hours drive north of Perth or just two hours east of Geraldton. We have first rate facilities to suit all travelers including; motel style unit accommodation for singles, couples or families, large powered or unpowered caravan sites and drive through sites big enough to suit the largest RV. Pets are welcome to this clean and friendly park.

One of the best features of the Yalgoo Caravan Park is its central location to the many attractions in the region. Within a short distance from the park you can experience a wildflower wonderland from late July to September, visit one of the smallest Dominican Chapels built by Monsignor Hawes and see majestic Wedge Tail Eagles, kangaroos or emus in their natural environment. For the convenience of our visitors there is a tourist information centre situated in the caravan park.

The Yalgoo Caravan Park offers travelers a full range of on-site facilities including:

- Rammed earth units to accommodate all types of travelers
 - Drive through sites for the largest bus, motor-home or caravan
 - Shady large sites with concrete slabs
 - Modern camp kitchen with fridge, microwave, 2 hotplates, toaster & electric jug
 - Laundry with washing machine & dryer
 - Ensuite style bathrooms
 - Family bathroom with full size bath
 - Large disabled shower/toilet room for wheelchair and carer
 - Sullage dump point
 - Water access
 - BBQ's
 - Tourist information centre at park
 - Pet friendly
 - Telstra mobile reception in town
 - Shady, grassed and level tent sites
- Pension discount available.

Address Gibbons Street, Yalgoo

Phone 08 9962 8472

Email cpark@yalgoo.wa.gov.au

Fax 9962 8020



NEWSLETTER FEEDBACK

Tell us what you liked, what you didn't like, what could be improved and what you would like to see.

Cut out and drop your feedback form into the Shire office, or place in the **Bulldust Feedback Box** at the Shire of Yalgoo reception.

YALGOO BULLDUST

SEPTEMBER 2020



A FEW KIND WORDS

HELEN PRATT

YALGOO CARAVAN PARK MANAGER

I would like to say a massive thankyou to Helen at the Caravan park, for all her help and hospitality. Helen made us feel so very comfortable that we will be most definitely be coming back again.

Absolutely loved the town and the people. Thankyou very much for making our first time prospecting weekend one to remember.

C & B Bucar



SHIRE OF YALGOO

37 Gibbons St, Yalgoo.
Western Australia, 6635.
Phone: 9962 8042
www.yalgoo.wa.gov.au